



© DO NOT SCALE DRAWING
 Lee Evans Partnership LLP own the copyright of this and any associated documents. Such documents may not be used or reproduced for any purpose other than that for which they were created.

NOTES - GENERAL
 Disclaimer: The documents listed/attached are uncontrolled versions issued to enable the recipient to prepare their own documents/models/drawings for which they are solely responsible. The documents listed are based on background information current at the time of issue. Lee Evans Partnership accepts no liability for any such alterations or additions to or discrepancies arising out of changes to such background information which occur to that information after it is issued by Lee Evans Partnership.
 - Do not scale from a drawing - Work to figured dimensions only. All dimensions to be checked on site prior to the execution of any work.

AREAS
 - Plans to be read in conjunction with accompanying area schedule, if any and as noted on the drawings, and any discrepancies should be highlighted.
 - Areas as noted are subject to change due to ongoing co-ordination with Mechanical, Electrical, Fire and Transport Consultants, client brief changes, and the outcome of discussions with external parties, such as EDC planning department.
 - Areas shown are indicative and must be reviewed and confirmed by the cost consultant, who should highlight any discrepancies.
 - Areas noted (GEA / GIA / NDA / NIA / NJA) are measured and calculated generally in accordance with RICS code of measuring and have been calculated in metric units unless instructed otherwise.
 - Construction tolerances, work by others and design by others may affect the stated areas and increases and decreases inherent in the design development and construction processes.
 - Lee Evans Partnership do not take responsibility for areas measured and noted.

BOUNDARIES
 - This drawing shows the general position of the boundaries. It does not show the exact line of the boundaries. Measurements scaled from this plan may not match measurements between the same points on the ground.

COORDINATION
 - The various elements of the building have been coordinated as far as is possible at this stage of the design process. As the design develops, further coordination might result in loss of area or a change in design. All structure shown is indicative: refer to Structural Engineer's design.

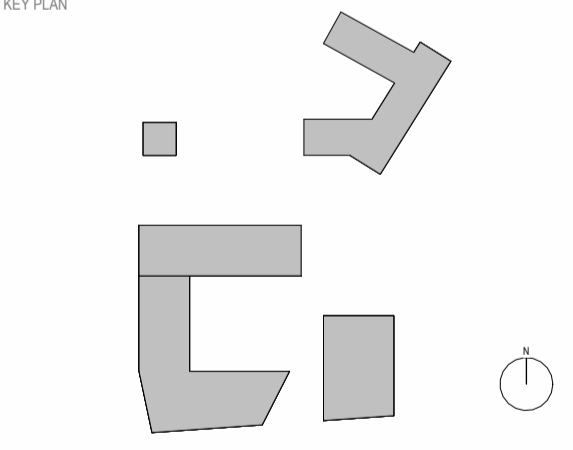
SITE PLAN KEY:

1. Secondary school courtyard
2. Primary school playground
3. Central lawn area
4. MUGA
5. Fastrack plaza public realm
6. Sports pitches (4 football pitches, 1 cricket pitch, 1 AG pitch, 1 athletics track)
7. Rooftop areas
8. Secondary school Staff car park
9. Primary school Staff car park
10. Visitor and Nursery drop off car park
11. Boulevard
12. Grass banks

FOR PLANNING PURPOSES ONLY



Revision	Description	DRN	CHK	Date
T01	Stage 4 Tender	MP	MN	14/12/23
P02	PS NMA- Submission	CB	MN	02/03/23
P01	PLANNING - Primary School Additional Classrooms	CB	MN	05/11/21



ISSUE STATUS:
 STAGE 4-TENDER
 chartered architects and planning consultants
 St Johns Lane
 Canterbury
 CT1 2QQ
 T: 01223 784444
 www.lee-evans.co.uk e-mail: arch@lee-evans.co.uk

CLIENT:
 Academy Consulting

PROJECT NO	ISSUE DATE	DRAWN BY	CHECKED BY	SCALE
084678	12/07/19	TC	MN	1:1000@A1

DRAWING TITLE:
 Site Plan

DRAWING NUMBER	REVISION
AAA_LEP_ZZ_ZZ_DR_A_00200	T01

1 Proposed Site Plan
 1 : 1000