



# Alkerden Academy Temporary School

## Travel Plan

On behalf of **Eastern Quarry Ltd**

Project Ref: 332610787 | Rev: AA | Date: January 2025

---

Registered Office: Buckingham Court Kingsmead Business Park, London Road, High Wycombe, Buckinghamshire, HP11 1JU  
Office Address:

## Document Control Sheet

**Project Name:** Alkerden Academy Temporary School

**Project Ref:** 332610787

**Report Title:** Travel Plan

**Date:** 22<sup>nd</sup> January 2025

	Name	Position	Signature	Date
<b>Prepared by:</b>	Gary Heard	Director		22-01-2025
<b>Reviewed by:</b>	Gary Heard	Director		22-01-2025
<b>Approved by:</b>	Gary Heard	Director		22-01-2025
<b>For and on behalf of Stantec UK Limited</b>				

Revision	Date	Description	Prepared	Reviewed	Approved

This report has been prepared by Stantec UK Limited ('Stantec') on behalf of its client to whom this report is addressed ('Client') in connection with the project described in this report and takes into account the Client's particular instructions and requirements. This report was prepared in accordance with the professional services appointment under which Stantec was appointed by its Client. This report is not intended for and should not be relied on by any third party (i.e. parties other than the Client). Stantec accepts no duty or responsibility (including in negligence) to any party other than the Client and disclaims all liability of any nature whatsoever to any such party in respect of this report.

## Contents

<b>1</b>	<b>Introduction</b> .....	<b>1</b>
1.2	School Travel Plans .....	1
1.3	Eastern Quarry .....	1
1.4	Alkerden Academy site location .....	2
1.5	This document.....	3
<b>2</b>	<b>Proposed development</b> .....	<b>5</b>
2.1	Alkerden Academy – end state.....	5
2.2	Alkerden Academy - temporary school proposed.....	5
2.3	Proposed operation .....	6
2.4	Illustrative masterplan .....	6
2.5	Access.....	7
<b>3</b>	<b>Planning framework and context</b> .....	<b>8</b>
3.2	Eastern Quarry planning permission.....	8
3.3	Eastern Quarry Transport Strategy .....	9
3.4	Alkerden Area Master Plan (AMP).....	10
3.5	Parking Management Plan (PMP).....	10
3.6	Implementation Framework.....	11
3.7	Ebbsfleet Design Guide .....	12
<b>4</b>	<b>Site access opportunities</b> .....	<b>13</b>
4.2	Walking and cycling.....	13
4.3	Fastrack and bus services.....	14
4.4	Rail connections.....	16
4.5	Vehicular access.....	17
4.6	On site parking .....	18
<b>5</b>	<b>Travel Plan aims and objectives</b> .....	<b>19</b>
<b>6</b>	<b>Targets and monitoring</b> .....	<b>20</b>
6.2	Targets .....	20
6.3	Monitoring .....	21
6.4	Review .....	21
<b>7</b>	<b>Travel Plan measures</b> .....	<b>22</b>

## Travel Plan

**Appendix A – Fastrack route map and timetable**

**Appendix B – Pedestrian and cycling routes**

**Appendix C – Wider area routes**

**Appendix D – Go-Coach details**

## 1 Introduction

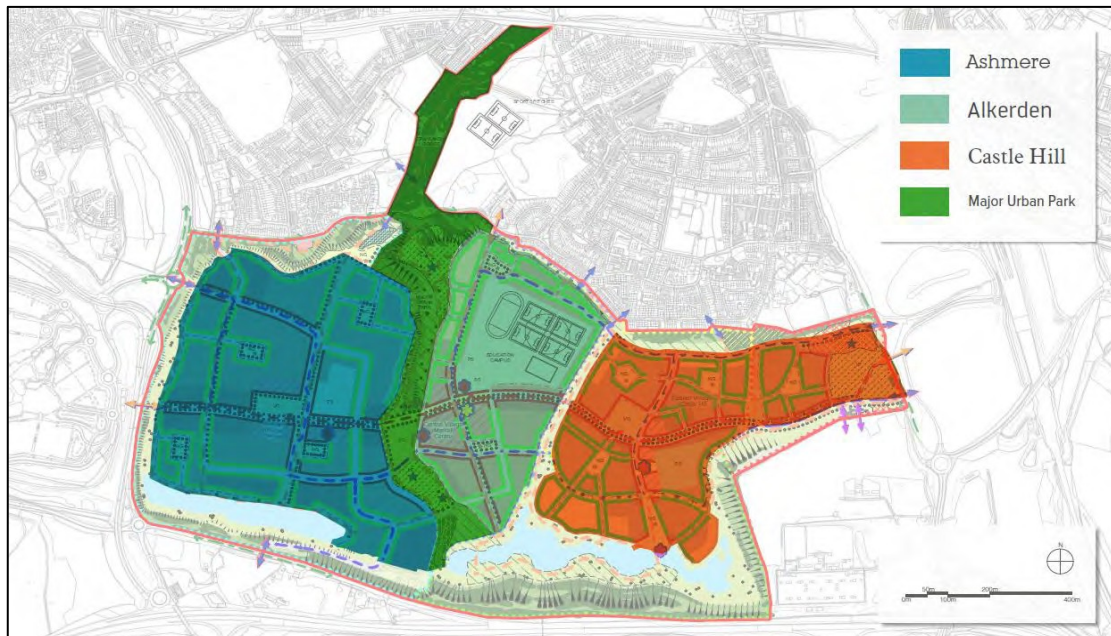
- 1.1.1 This Travel Plan has been prepared by Stantec UK, on behalf of Eastern Quarry Ltd (EQL).
- 1.1.2 As part of the Eastern Quarry development, EQL will be providing a new education campus, known as the Alkerden Academy. The Alkerden Academy will provide a secondary school, a primary school and dual use sports facilities.
- 1.1.3 Stantec UK have been appointed by Eastern Quarry Ltd to provide Transport Planning support to a planning application for a temporary school at Alkerden within Eastern Quarry. The temporary school proposed will sit within the site of the permitted Alkerden Academy and within the general envelope of the extant permission (EDC/20/0002).
- 1.1.4 Planning permission EDC/20/0002 is supported by a number of Transport Planning technical documents including a Framework Travel Plan. The Framework Travel Plan has been reviewed in the context of the temporary school proposals and this bespoke Travel Plan document developed.
- 1.1.5 A pre-application scoping exercise has been completed with KCC (the highway authority) and EDC (the planning authority) during November 2023 to confirm the scope and content of this Travel Plan document, whilst fitting within the envelope of the Framework Travel Plan.

### 1.2 School Travel Plans

- 1.2.1 A School Travel Plan is a document which sets out how a school will promote safer, active and sustainable travel to school. The main objective will be to minimise the number of pupils that are driven to and from school by private vehicle.
- 1.2.2 Whilst reducing the number of car journeys to school, and hence reducing the potential conflict with pedestrians and cyclists and associated air quality issues, this will also encourage active journeys to school, contributing towards physical and mental wellbeing.
- 1.2.3 A Travel Plan will provide a school with information on travel behaviour to and from school and the potential means in which this can be further biased towards sustainable modes. The information gathered will allow the school to make informed decisions in prioritising measures and initiatives to be implemented.
- 1.2.4 The whole school community should be involved in developing, implementing and maintaining and monitoring a School Travel Plan.
- 1.2.5 This Travel Plan provides supporting documentation to the planning application for a temporary school to inform planning and highway officers. It is intended that this document provides a Travel Plan for the temporary school end users to implement and monitor.

### 1.3 Eastern Quarry

- 1.3.1 Eastern Quarry is located within the Ebbsfleet Valley and is the largest development site in the Ebbsfleet Development Corporation (EDC) administrative area.
- 1.3.2 Eastern Quarry lies between the towns of Dartford to the west and Gravesend to the east. Immediately to the west lies the Bluewater shopping centre and to the east lies Ebbsfleet and the International Station.



*Eastern Quarry villages*

- 1.3.3 Outline planning consent for Eastern Quarry was first granted in 2007, making provision for up to 6,250 new homes. Also included is office space, education, retail areas, hotel, leisure and community space or social infrastructure.
- 1.3.4 The planning permission has been varied and evolved over time. The site is currently being built out and will comprise three villages. The first of these is progressing as Castle Hill. Eastern Quarry comprises three main development areas, those being Castle Hill, Alkerden and Ashmere as illustrated above.
- 1.3.5 The three villages will be self contained but linked by Fastrack, with each village being served by its own public open space and two of the villages incorporating mixed use centres. New development will be located to the east and west of the Major Urban Park and connected across the site by Fastrack.
- 1.3.6 Sustainable development at Eastern Quarry is fundamental in its delivery as part of the Ebbsfleet Garden City vision. New development is already underpinned by high quality public transport, and this will increase and be enhanced as further development comes forward.
- 1.3.7 The movement strategy for Eastern Quarry is secured through a series of documents, and these ensure convenience in using sustainable modes of travel for day to day needs. Eastern Quarry will increasingly integrate with the surroundings, in a transport context, as build out continues across the site.
- 1.3.8 The approved Eastern Quarry Transport Strategy sets out all aspects of delivering a sustainable transport network to serve Eastern Quarry. The approach established by the approved Transport Strategy is one to promote and encourage modal shift such that travel and parking demand and provision will be moderated and managed, whilst recognising that the car has a legitimate place in the overall transport mix.

## **1.4 Alkerden Academy site location**

- 1.4.1 The Site Wide Masterplan (SWMP) submitted and approved as planning application EDC/18/0065 is illustrated below. The general location of the Alkerden Academy site within the Eastern Quarry site is identified by the red circle.



*Eastern Quarry Site Wide Masterplan and Alkerden Academy location*

## 1.5 This document

- 1.5.1 It is the case that the Alkerden Academy has Reserved Matters Approval as an integral part of the Eastern Quarry planning permission described in Chapter 3. Hence, the transport effect, transport strategy and transport measures related to the Alkerden Academy have already been tested and accepted by the highway and planning authorities as they are inherent in the Eastern Quarry permission.



- 1.5.2 It is intended that this document provides a Travel Plan for the temporary school end users to implement and monitor.
- 1.5.3 The following document takes the structure summarised below:

- Section 2 details the proposed temporary school development.
- Section 3 summarises the planning framework and context.
- Section 4 summarises the existing and proposed transport network.
- Section 5 confirms the Travel Plan objectives.
- Section 6 considers the targets and monitoring of the Travel Plan.
- Section 7 considers Travel Plan measures.



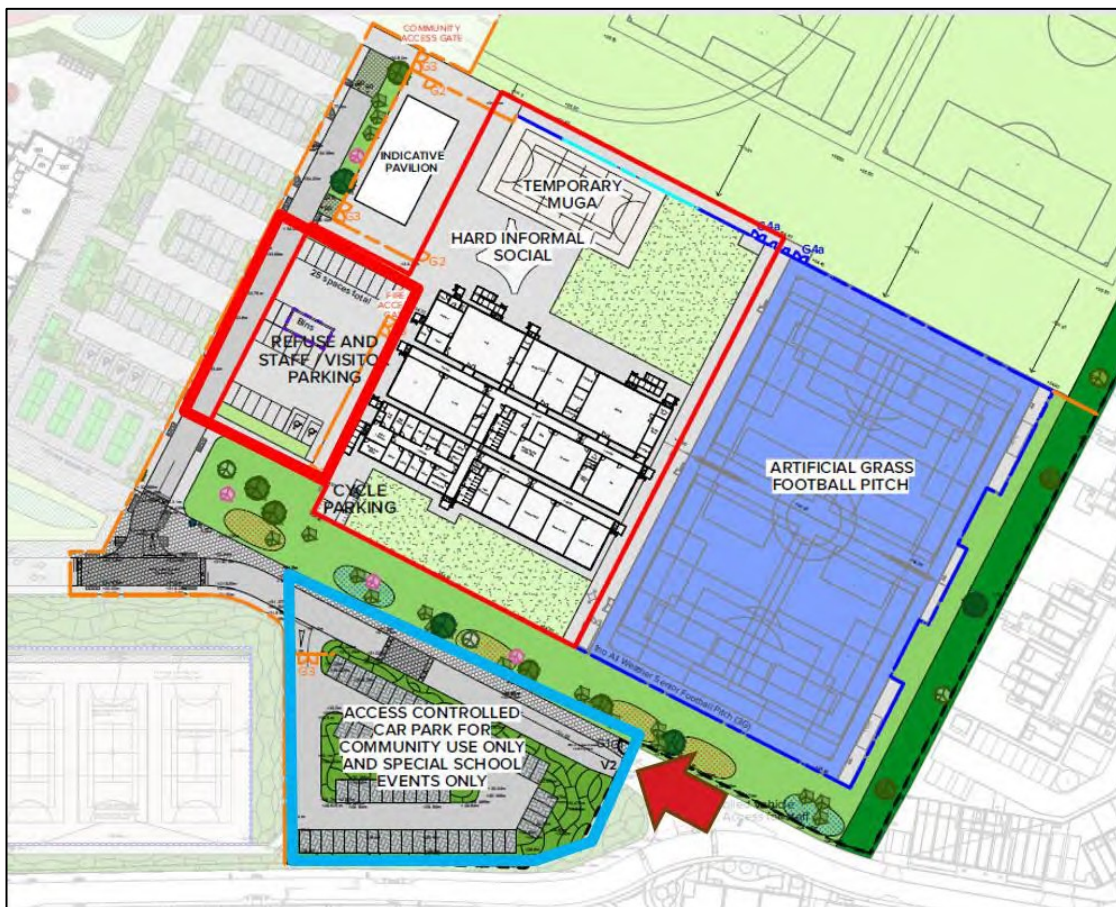
## 2 Proposed development

### 2.1 Alkerden Academy – end state

- 2.1.1 When fully built, the permitted Alkerden Academy will include primary and secondary schools, a dual use sports hall and outdoor sports pitches. It will be ‘wrapped’ by residential development on the west, north and east sides.
- 2.1.2 The secondary school building occupies an important position in Alkerden at the junction between Fastrack and the north south Primary Street. This building will front directly on to the Fastrack route and face the market centre.
- 2.1.3 The areas within the Alkerden Academy site, but external to the school buildings will be managed as a private space, albeit with controlled public use. The end state development will comprise the following:
- A 2 form entry primary school
  - An 8 form entry secondary school
  - A nursery
  - A multi agency space.
  - A dual use sports facility building.
  - Running track
  - Playing pitches comprising 3 football pitches and 2 artificial pitches.

### 2.2 Alkerden Academy - temporary school proposed

- 2.2.1 It is proposed that the temporary school will be in place for one year starting from September 2025 and will comprise and have access to the following:
- The temporary school will comprise 5 classes of 30 pupils (150 year 7 pupils)
  - Provision of 25 parking spaces centrally for staff, visitors and accessible parking (shown bounded red below).
  - Community will have access to the 2 dual use sports pitches outside of school hours as per the extant permission.
  - Have access to the 61 space car park on the south boundary for use by community sports pitch users and for exceptional events if required (eg parents evening). This is shown bounded below.
  - Parking will be accessed from the south east site access
  - There will be no bus / coach drop off on site.
  - Refuse collection and deliveries will access the site from the south east.
  - The same working / opening hours as per the extant permission
- 2.2.2 The figure below illustrates the location of the access and parking areas.



## 2.3 Proposed operation

2.3.1 It is intended that the various uses on the temporary school site will operate as follows :

- Secondary school - usual school working hours, assumed to be 07:00-18:00 as described for the extant permission.
- Community sports - outside of school operating hours, assumed to be 18:00-22:00 as described for the extant permission.
- Playing pitches – outside of school operating hours, assumed to be 18:00-22:00 plus weekend 0800-2200 as described for the extant permission.

2.3.2 On this basis there is no intention to overlap the operational hours between school use and public use of the Alkerden Academy site. This ensures that the pupils attending the schools are not in contact with members of the public on site.

## 2.4 Illustrative masterplan

2.4.1 An extract from the illustrative temporary school masterplan is shown below.



## 2.5 Access

2.5.1 The movement network within Alkerden responds to the principles for transport established in the approved Transport Strategy for the overall Eastern Quarry site. There are a series of core objectives that define the approach to movement within, to and from the site, which are:

- To be oriented towards public transport and 'soft' modes of travel.
- To provide part of the wider Kent Thameside transport network.
- To follow the principles of permeable grid layouts.
- Access to facilities provided within the site from outside should be most convenient by public transport and 'soft' modes.
- Unrestrained car use to be limited and managed.

2.5.2 The Alkerden Academy site benefits from a highly accessible location and will be directly accessible by Fastrack and local buses, walking and cycling and connections to the rail station at Ebbsfleet. Hence, the transport network in the vicinity of the site will provide for a variety of travel modes to be used to access the Alkerden Academy site and surrounds.

2.5.3 With respect to the proposed temporary school, access to this is considered in greater detail in the following sections of this report.

## 3 Planning framework and context

- 3.1.1 It is the case that the Alkerden Academy has outline planning permission as part of the Eastern Quarry planning permission and has since gained planning permission as a Reserved Matters Application. Hence, the transport effect, transport strategy and transport measures related to the Alkerden Academy have already been tested and accepted by highway and planning officers.
- 3.1.2 The following paragraphs summarise the planning context relevant to the proposed Alkerden Academy development and the now proposed temporary school.

### 3.2 Eastern Quarry planning permission

- 3.2.1 The outline planning permission for Eastern Quarry has a lengthy history and complex structure comprising the decision notice, the s106 agreement, several layers of guiding documents and a series of overarching strategies which form a framework for implementing the development and reserved matters applications.
- 3.2.2 Outline planning consent for Eastern Quarry was first granted in 2007, making provision for up to 6,250 new homes. Also included is office space, retail areas, hotel, leisure and community space or social infrastructure.
- 3.2.3 More detailed development parameters are required by the planning permission to be set out within RMAs, including Area Masterplan (AMP) documents to be submitted as each area of the Eastern Quarry development is progressed.
- 3.2.4 The planning permission has been varied and evolved over time and the key landmarks are summarised below.
- DA/03/1134/OUT - Outline permission for a mixed development comprising up to 6,250 dwellings and up to 231,000m<sup>2</sup> of built floorspace for business premises; education; community and social facilities; hotels; theatre; and supporting retail and leisure facilities and associated works. This application was approved on 13<sup>th</sup> November 2007.
  - DA/12/01451/EQVAR – A s73 application for the variation of conditions of DA/03/1134/OUT to reflect a revised disposition of land uses across the site. This was approved on 18<sup>th</sup> January 2013.
  - 14/00584/EQCHC - Submission of the Castle Hill (Central) Area Master Plan pursuant to Condition 19 of Planning Permission DA/12/01451/EQVAR. This was granted permission in October 2014.
  - EDC/17/0048 - Application for variation of conditions 3 & 4 attached to planning permission reference no. 12/01451/EQVAR for a mixed use development of up to 6,250 dwellings & up to 231,000 square metres of non-residential floorspace with associated infrastructure and open space; to allow for the substitution of approved parameter plans and documents under condition 3 and revised strategies under condition 4.
  - EDC/17/0082 - Application for approval of condition 19 Part P attached to planning permission reference no. DA/12/01451/EQVAR relating to a parking management plan. This condition was discharged in February 2018.
  - EDC/18/0065 - Application for approval of condition 10 attached to outline planning permission reference no. EDC/17/0048 relating to the SWMP. The SWMP was approved in December 2018

- EDC/18/0195 - Application for the approval of conditions 19 & 20 attached to planning permission reference no. EDC/17/0048 relating to Submission of an Area Masterplan and Area Design Code for the Alkerden area. The AMP for Alkerden was approved in June 2019. This incorporates approval for the submitted Parking Management Plan for Alkerden and Ashmere.
- EDC/20/0070 - Approved 22 November 2021. Application relating to the Area Masterplan.
- EDC/23/0082 (Approved 03 August 2023) – Non material amendment.
- EDC/22/0193 (Approved 16 February 2023) – Non material amendment.
- EDC/21/0216 (Approved 25 February 2022) – Non material amendment.
- A Non Material Application has also been submitted for the outline application for the re-arrangement of the secondary school sports pitches and is awaiting validation.

### 3.3 Eastern Quarry Transport Strategy

3.3.1 The adopted Eastern Quarry Transport Strategy (Fourth Edition, dated March 2018) has been set against the context of the Ebbsfleet Development Corporation and the aspirations for a “Garden City” at Ebbsfleet, as well as the current National Planning Policy Framework.

3.3.2 The Transport Strategy includes a suite of objectives and principles to encourage and deliver sustainable transport choices and opportunities and hence effect mode shift to sustainable transport modes within Eastern Quarry. These include:

- Fastrack corridor infrastructure to be provided across the development; crossing Southfleet Road on the eastern side and on the western side connected to Bluewater shopping centre via a link to Hedge Place roundabout, or alternatively via tunnels through the chalk spine
- Provision of a good network of internal paths and cycling routes.
- Early pump-priming of public transport links which is now implemented.
- Through highway routes to be available across the development, but only in a local context.
- Multiple routes between villages to be provided for different modes.
- Managed car parking provision.
- Convenient and preferential cycle parking at facilities.
- Transport Fund to accrue in order to provide a fund that can be used for intervention if required with traffic management toolkit measures.
- Traffic generation targets based on the Eastern Quarry Transport Assessment (submitted with the planning application, August 2006).
- Vehicle monitoring system to be established to measure traffic flow and differentiate between through traffic and development traffic.

3.3.3 The Transport Strategy promotes sustainable travel objectives and initiatives to maintain car use within clearly defined targets. This includes a significant contribution of up to £10 million as part of developing and encouraging sustainable transport infrastructure and initiatives within Eastern Quarry. This Transport Fund will be used to fund a range of sustainable transport measures including support to initiate and then provide public transport services that serve the site and to implement the Traffic Management Toolkit.

- 3.3.4 The Transport Strategy philosophy has led to the development of a number of core principles to be applied to development at Eastern Quarry. One of those is:

*“to manage car use and reduce the convenience of car use within Kent Thameside, whilst at the same time providing sufficient parking for residents needs and in line with market conditions for commercial land uses so as not to discourage companies relocating to the area;”*

- 3.3.5 In addition to the core elements, the transport system at Eastern Quarry will be delivered against a set of transport principles. Transport Principle 2 is:

*“Reduced Reliance on the Private Car - EQ2 development to make a positive response to reducing the necessity to use the private car.”*

- 3.3.6 The Alkerden Academy site is well placed to meet and contribute towards the various principles and objectives through its location at the heart of Eastern Quarry and alongside the central movement corridor formed by the Fastrack route.

### **3.4 Alkerden Area Master Plan (AMP)**

- 3.4.1 In accordance with condition 19 of 12/01451/EQVAR (and EDC/17/0048), an AMP is required for each parcel of land for each phase as the development proceeds.

- 3.4.2 The Alkerden AMP was submitted to EDC in December 2018 and was approved during June 2019. The document details the key themes and principles that inform the design of development of Alkerden and movement within it. An updated AMP was approved 22<sup>nd</sup> November 2022 (EDC/20/0070).

- 3.4.3 Part (p) of condition 19 requires details of ‘Car parking standards, typologies and distribution and car parking management measures’. This was addressed through submission of the Parking Management Plan which was approved alongside the Alkerden AMP and is considered below

### **3.5 Parking Management Plan (PMP)**

- 3.5.1 The S106 for Eastern Quarry identifies the provision of an AMP as a trigger for review of the PMP. Schedule 9 of the S106 Agreement for Eastern Quarry defines the PMP as:

*“the plan or plans complying with the Framework Parking Management Plan Approved from time to time on Approval of Area Master Plans pursuant to Planning Condition 19”.*

- 3.5.2 Informative 3 of the EDC/17/0082 decision notice states

*“The applicant is reminded that a full and robust Parking Management Plan should be provided for the Central and Western Villages coming forward in the remaining areas of Eastern Quarry. This should be provided for consideration by the Local Planning Authority at the appropriate time, that is, on Approval of Area Master Plans for each relevant village.”*

- 3.5.3 The Transport Strategy sets out the Framework PMP. Each AMP submission is expected to incorporate a PMP that will establish some key criteria for the parking provision within that part of the site. These criteria will be:

- The parking standards to be applied within individual building or land use curtilages for each land use within the AMP;
- The additional provision to be made in respect of visitor parking;

- The extent of provision to be made within charged car park areas, along with an overview of the parking charge regime – i.e. short stay or long stay, particularly associated land uses (especially in retail, leisure and community areas), management and enforcement etc.; and
- The locations where on-street parking is considered appropriate, and an overview of the volume of parking that is provided by this means, and whether it is envisaged that it will be charged for and/or time controlled (parking management TRO's to be funded by the owner in this case).

3.5.4 Hence, a detailed PMP document has been prepared to respond to Informative 3 of the decision notice in providing a full and robust PMP for the Alkerden and Ashmere villages. This was included with the Alkerden AMP described above and has now been approved by the planning authority. On this basis, the PMP forms the basis for considering parking supply and management within future development parcels at Eastern Quarry, including the Alkerden Academy site.

### 3.6 Implementation Framework

3.6.1 Ebbsfleet Development Corporation produced a document called the Implementation Framework to inform, shape and support it's delivery work.

3.6.2 There are a number of objectives and aspirations contained within the Implementation Framework that are relevant to considering transport, travel and parking within the Alkerden Academy, including those extracts below:

*".....The fundamental principle will be the promotion of active, enjoyable and sustainable shorter journeys within the local area, to reduce car dependence and pressure on the local road networks."*

*"An evolving Parking Strategy : Pioneering residents will have higher parking requirements than later settlers, who will have everything they need within a 5 minute walk. Parking provision for each neighbourhood will therefore be aligned with the neighbourhood's access to local facilities, as well as the city's general stage of growth, to try to balance the parking requirements of today with the road capacity of the future."*

*"The Framework encourages a 'Public Transport Oriented Development' (PTOD) approach to planning and design to reduce car dependence and support active, healthier and more affordable local journeys."*

*"Increased residential densities around public transport nodes, and ensuring that the majority of residents live within 400 metres of a Fastrack stop. At Ebbsfleet the opportunity exists to build relatively higher densities around Fastrack and other bus stops. Over time, this will encourage residents to use non-car modes thereby reducing congestion and car parking;"*

*"Managing car parking provision and demand to reduce reliance on private cars and their dominance over our streets and public spaces."*

3.6.3 It is evident from the extracts above that the Implementation Framework recognises the need to promote and encourage sustainable travel choices and also to provide parking, but at an appropriate level that reflects the accessibility and proximity of development to public transport nodes (consistent with Paragraph 110a of the NPPF 2023) and that this level may change over time and by location.

### 3.7 Ebbsfleet Design Guide

- 3.7.1 Since the submission of the previous planning application 20/0002 the EDC Design Guide has been published. This is a suite of 3 design guide documents comprising:
- Architectural character design guide
  - Ebbsfleet public realm strategy
  - Sustainable travel strategy
- 3.7.2 With respect to the Sustainable Travel Strategy (STS) this has 3 sections online:
- Getting about in Ebbsfleet today
  - Explore the vision
  - Design guidance
- 3.7.3 The Design Guidance section is provided for applicants seeking planning permission within Ebbsfleet. It is a non-statutory design guidance published to assist the development of a travel strategy that promotes sustainable travel options and parking approach.
- 3.7.4 Nevertheless, the guidance is used by EDC to promote sustainable travel and to allow parking in appropriate locations within future developments. EDC use the guidance to facilitate discussions during the planning process.
- 3.7.5 In the context of an existing planning permission (including outline masterplans, area masterplans and design codes) the document is stated as providing supporting guidance, which can be used if the applicant considers it beneficial. In this respect it is not planning policy.



## 4 Site access opportunities

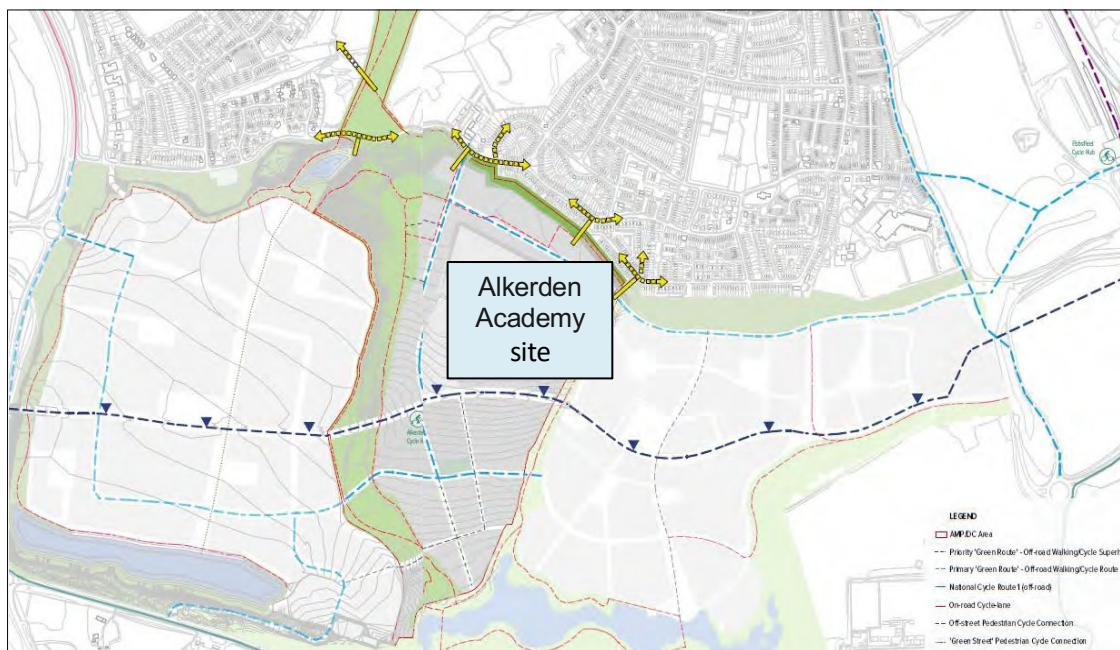
4.1.1 The following section summarises the access opportunities for the temporary school proposed, for all travel modes.

### 4.2 Walking and cycling

4.2.1 Over the course of the development of Eastern Quarry the walking and cycling routes in the area have been enhanced through the routes around the Ebbsfleet station and the development that surrounds it. Walking and cycling routes within the Garden City will continue to become more comprehensive, with amenity routes and links between all of the various development areas on the site as development progresses.

4.2.2 Work undertaken by Space Syntax (May 2018) on behalf of EDC demonstrates that 95% of the Eastern Quarry development is within a 15 minute walk to a school and 97% within a 5 minute cycle ride to a school.

4.2.3 The figure below is extracted from the AMP document and summarises the key walking and cycling routes within the wider Eastern Quarry context following full build out.



*Key walking and cycling routes*

4.2.4 It is noted that the key corridor across the Eastern Quarry site is the Fastrack corridor denoted by dashed dark blue. This will include dedicated and segregated walking and cycling routes alongside and form the spine of the site. This corridor passes alongside the front of the Alkerden Academy and will hence provide a key connection for all users of the site. This route is supplemented by off road walking and cycling routes denoted by dashed light blue lines.

4.2.5 With respect to the walking and cycling trips, these will enter / leave the site via the access to the south east corner alongside the vehicular access.

4.2.6 The propensity of walking and cycling are expected to be facilitated by the proximity of the school catchment to the proposed temporary school.

4.2.7 With respect to cycle parking, the figure opposite is an extract from the temporary school proposals masterplan.

4.2.8 It illustrates the proposed location of the proposed 30 covered cycle parking spaces.



### 4.3 Fastrack and bus services

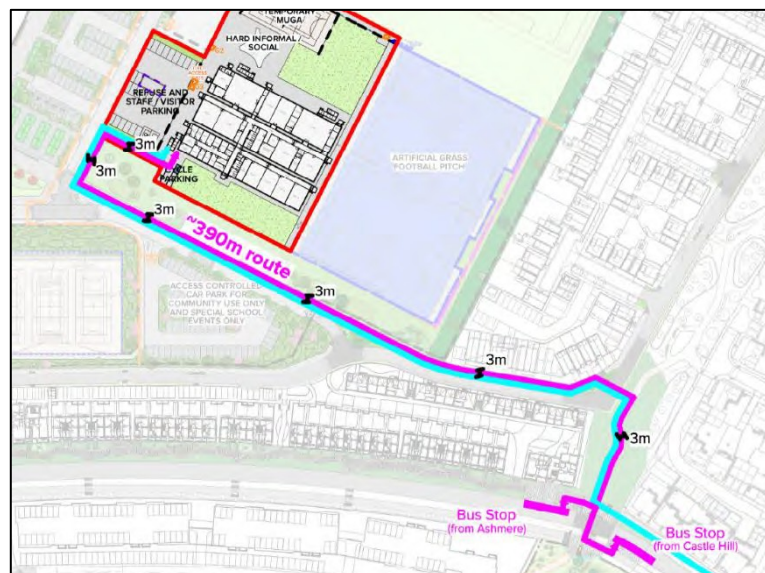
4.3.1 The development at Eastern Quarry has been planned and designed as a public transport oriented development, with a strong emphasis on travel by more sustainable modes than the car.

4.3.2 The public transport services at Eastern Quarry and within the local area have seen a significant change in emphasis since the introduction of Fastrack Route A between Dartford and Bluewater and Route B between Dartford and Gravesend. Fastrack runs on a network of high density routes between Dartford and Gravesend with a combination of on street running and segregated route. Appendix A contains the Fastrack network map and timetable as downloaded from <https://www.kent-fastrack.co.uk>.

4.3.3 The completion of the Fastrack network across the site will connect the site to the two town centres of Gravesend and Dartford, the regional shopping centre at Bluewater, the International rail station at Ebbsfleet on HS1 and local centres and rail stations. This network will be supplemented by additional local bus services within the Eastern Quarry site and walking and cycling networks across the Eastern Quarry site and linking to the local surrounds.

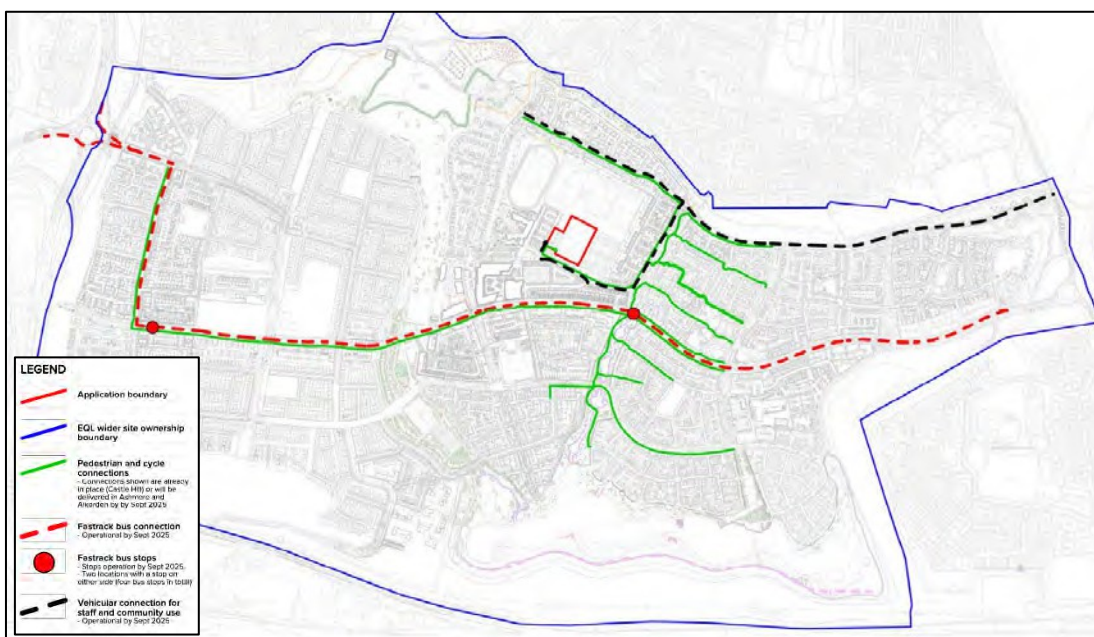
4.3.4 The Fastrack corridor will pass adjacent to the Alkerden Academy site and market centre.

4.3.5 The figure opposite has been produced by Define, and illustrates the location of the Fastrack stops in relation to the Temporary School site and the available pedestrian route (magenta) from the stops into the site.



4.3.6 This will comprise an approximately 390m route of 3m width (as shown in magenta on the plan extract). The figures is also included as Appendix B.

4.3.7 With respect to the temporary school provision (opening September 2025) it is anticipated that the Fastrack route will be passing through Eastern Quarry as shown by the dashed red line in the wider area figure below (provided by Define) and be operational by the opening of the temporary school. This figure is included at Appendix C.



4.3.8 Bus stops on the Fastrack route are expected to be at the location indicated by the red dots on the extract opposite. Footways will be available from this location to the temporary school as indicated by magenta line.

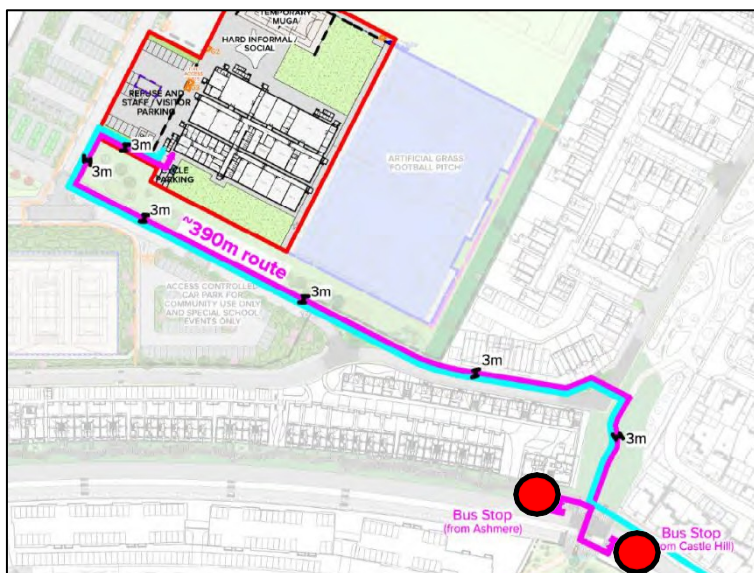
4.3.9 Eventually (at full build out) the bus stops will be outside the pedestrian access to the school on the south boundary.

4.3.10 With respect to local buses, Go-Coach launched a new bus service (GC1) on January 2nd 2025. This is a timetabled route and will revert to DRT (off peak) from February 2025. The details of this service are included as Appendix D.

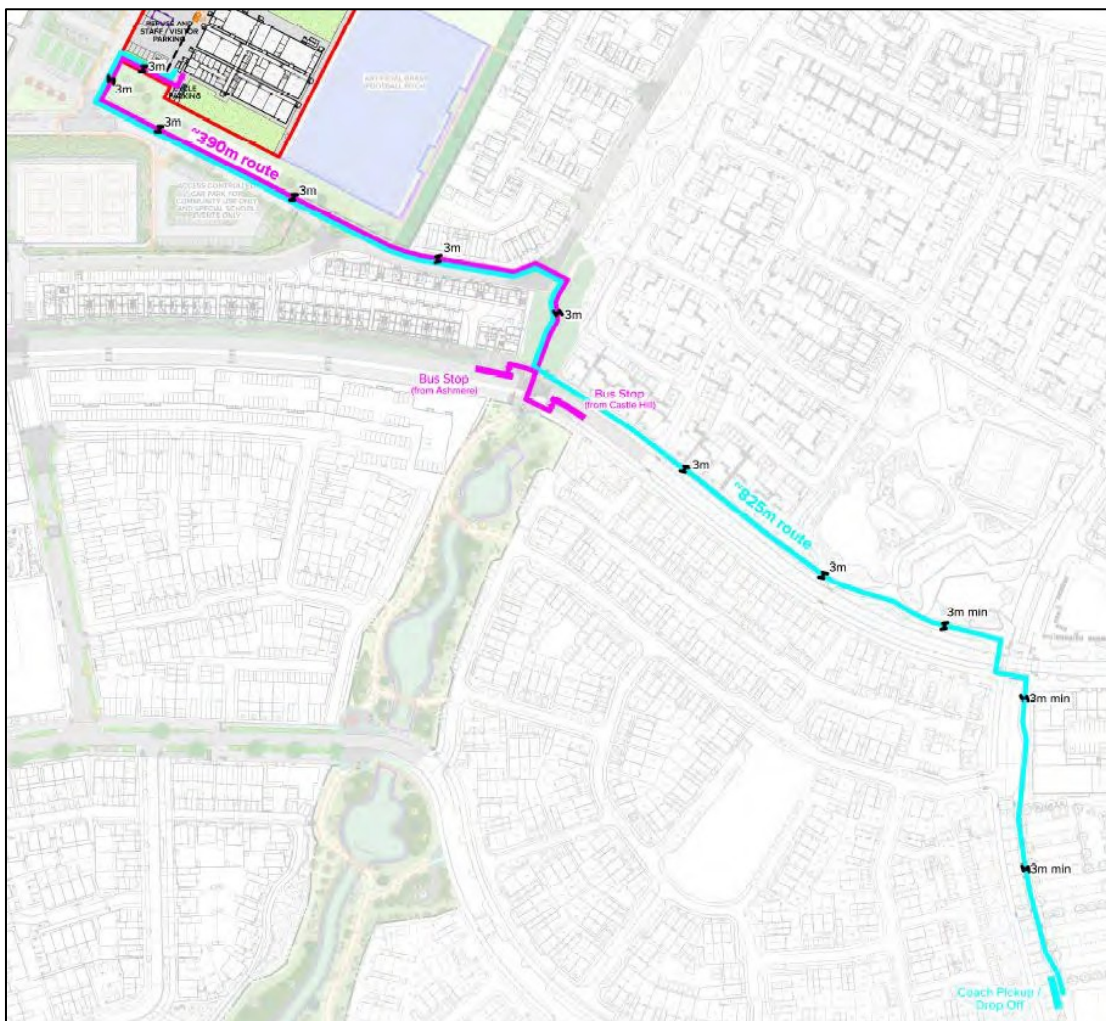
4.3.11 It is anticipated that bus stops will be provided on the north route (east to west) and that passengers will be able to use Portbridge Gardens as a walking route between the temporary school and bus stops.

4.3.12 The Schedule of Commitments (as set out in the approved Transport Strategy) provides a baseline level of provision of bus services.

4.3.13 The earliest opportunity to provide a through east-west route across the emerging Eastern Quarry development for public transport will be to establish a link onto Alkerden Lane near its eastern end (close to Childs Crescent) in Swanscombe. It is expected that this will be implemented by September 2025 (temporary school opening) following 2000 occupations.



- 4.3.14 The Alkerden Lane bus link will be provided in accordance with the approved SWMP and will allow bus services from Castle Hill to use Alkerden Lane to reach St Clements Way, providing access to Bluewater (and, by connection, to other key destinations).
- 4.3.15 Services that take advantage of the Alkerden Lane link will pass alongside the north boundary of the Alkerden Academy site. On this basis direct access will be possible from local buses, connecting with the pedestrian access proposed on the north boundary of the Alkerden Academy (at full build out) and using Portbridge Gardens for the temporary school.
- 4.3.16 No coach drop off is to be provided on site given the ongoing construction activity for the main Education Campus. A plan showing the pedestrian route from the temporary school to the proposed location in Castle Hill is included at Appendix B, demonstrating the routes are all a minimum 3m width. An extract is shown below indicating the route in blue at around 825m.

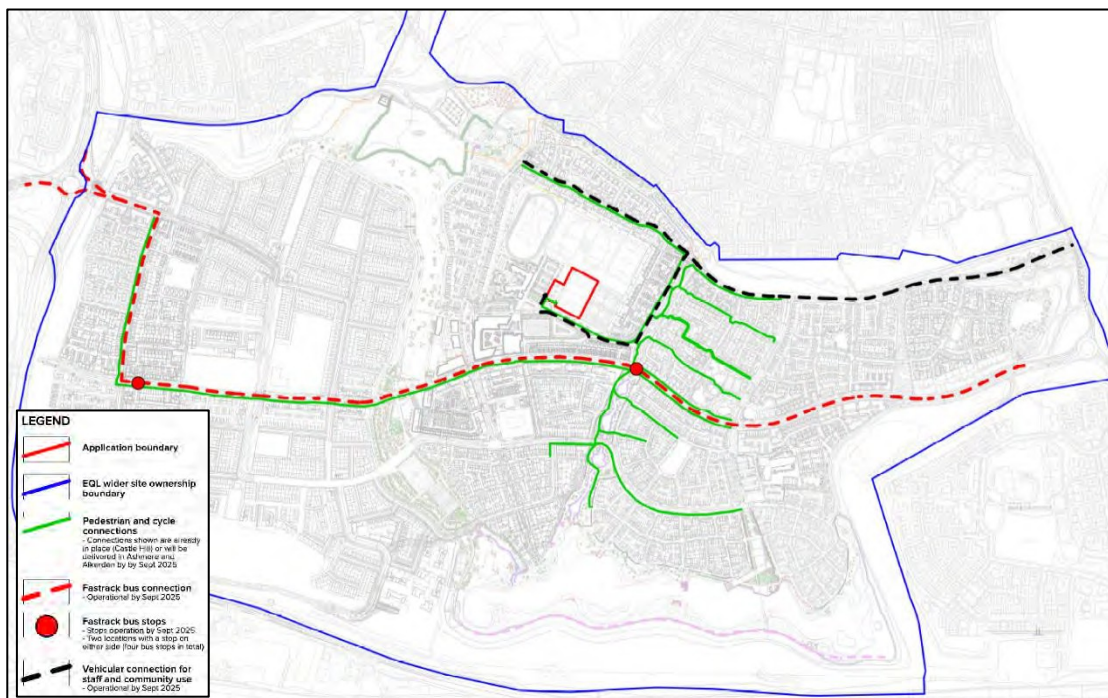


#### 4.4 Rail connections

- 4.4.1 Ebbsfleet International station lies to the east of Eastern Quarry and will be directly accessed via the Fastrack corridor.
- 4.4.2 The rail stations of Dartford and Gravesend lie further out and to the west and east respectively. These stations will also be directly linked by the Fastrack corridor and / or local bus routes.

## 4.5 Vehicular access

- 4.5.1 In summary there are two general vehicular access routes to Eastern Quarry from the B259 Southfleet Road to the east, one from the B255 St Clements Way to the west and one from the A296 Watling Street to the south.
- 4.5.2 A permeable grid approach for general traffic is adopted within Eastern Quarry to ensure that car use is provided for at an appropriate level as part of the overall movement and access mix.
- 4.5.3 The “Wider Area Routes” plan below (also included in Appendix C) illustrates the routes that will be open and available when the temporary school opens



Access points to Eastern Quarry

- 4.5.4 Picking up and dropping off of pupils will not be permitted on site for the temporary school as is the case for the extant permission. It is considered that providing a drop off area would contradict the principles established in the main campus permission. Neither the Trust nor the Applicant want to establish this precedent. The Trust, in their experience, have advised that secondary school pupils typically walk to school when residing in the local area.
- 4.5.5 The extant permission includes provision of two vehicular access points to serve the site, one from the west boundary and one from the south east boundary. The temporary school proposals will be served by the south east access whilst the west access will not be available until the school is fully opened due to its use as a construction access.
- 4.5.6 During the operation of the temporary school, expected to be for a one year duration, the south east access will be used to access all parking spaces and occasional refuse vehicles and delivery vehicles. There will be no requirement for bus / coach drop off on site (as confirmed by Alethia Academies Trust) and no parental vehicle access, other than for those that need accessible parking.
- 4.5.7 As per the extant permission, the vehicular access will be controlled by a gate or barrier that can be opened using a key fob issued to staff or an intercom for other users. This access will be controlled for the duration of the school working day (0700-1800). Between 1800-2200 and

at weekends the control will be removed to allow the general public to access the site for pre-booked community and sports uses.

- 4.5.8 There are currently signs along Portridge Garden to deter those who are not resident from parking along this road. NCP parking enforcement is used around Whitecliffe, their site visits can be increased once the Temporary School opens which should further aid in deterring parking.

#### **4.6 On site parking**

- 4.6.1 The parking provision to be applied at the Alkerden Academy and temporary school is addressed in separate Parking management Strategy documents and these should be referred to.

## 5 Travel Plan aims and objectives

5.1.1 The aims and objectives of the school Travel Plans should be set out and may include :

- Reduce the number of car journeys to and from school.
- Encouraging sustainable travel options such as walking, cycling and public transport.
- Raise awareness of travel issues associated with car use, such as road safety, pollution and congestion.
- Improve the safety on the school journey for those walking and cycling through education.
- Reduce and / or minimise the potential conflict of pedestrian, cycle and vehicular movements.
- Monitor and review Travel Plan targets and initiatives on a year by year basis.
- Influence the travel perceptions and travel behaviour of all site users.

## 6 Targets and monitoring

- 6.1.1 It is recognised that in order for a Travel Plan to be effective it must have measurable outcomes which can be monitored and reviewed on a regular basis.
- 6.1.2 A Travel Plan should set appropriate targets for reducing private vehicle trips and should be monitored annually to review the effectiveness of the Travel Plan message and to inform action and / or initiatives as appropriate for the forthcoming year.

### 6.2 Targets

- 6.2.1 Targets need to be set out within a Travel Plan and will need to be challenging, yet realistic targets that seek to reduce the number of vehicular trips and promote the more sustainable modes of travel.
- 6.2.2 Annual targets typically cover a five year period. Targets should be based on the SMART principles, as described below;
- Specific - A specific overall reduction in car based trips will be defined which will need to be achieved through the development of realistic Travel Plan measures.
  - Measurable - The number of private vehicle based trips will need to be monitored against the targets on a regular basis. Further initiatives and measures will be investigated and pursued should the development fail to meet these targets.
  - Achievable - Travel Plan measures should be implemented and their effectiveness monitored in order to ensure they are achievable.
  - Realistic – Realistic targets should be based upon a reduction of the proportion of car based trips.
  - Time-bound - The targets will need to be reviewed annually in order to clarify whether they are being achieved.
- 6.2.3 The maximum total two-way traffic generation target for the development has been based upon the potential traffic generation from the school. This has been considered on the basis of trip generation rates extracted from the September 2020 Parking Management Strategy.
- 6.2.4 The table below summarises the predicted trip generation rates and resultant trip generation for the morning and afternoon periods for the temporary school proposed.

Secondary school	AM 0800-0900			PM 1500-1600		
	In	out	2 way	in	out	2 way
Trip rate (per child)	0.090	0.077	0.167	0.045	0.076	0.121
Trip generation (150 children)	14	12	25	7	11	18

- 6.2.5 Hence the above rates and generation set a baseline target for the temporary school. It is then expected that the targets will revert to those set for the full school once this opens in September 2026 with its own Travel Plan document. It is typical to set Travel Plan targets for reducing private car use by 10% over a 5 year period for example.



6.2.6 Targets could be set for other transport modes such as walking, cycling and public transport for example. However, an increase in these travel modes could be implied by recording a reduction in car travel (assuming number of trips remains similar).

### 6.3 Monitoring

6.3.1 A Travel Plan will require a travel survey to be conducted at regular intervals to establish the travel habits of the school pupils and staff. This could be through a hands up survey to record the number of pupils travelling to school by each mode. A similar survey could be conducted for staff travel habits.

6.3.2 Staff and parents could be issued with a suitable questionnaire to establish common reasons as to why they travel by the mode that they do, what their preferred mode of travel would be, and why they can't currently adopt their preferred mode of travel.

6.3.3 The questionnaire would also present an opportunity to receive comments and feedback about any general concerns or issues with respect to the school travel arrangements.

6.3.4 It is proposed that the temporary school will complete a monitoring exercise at an appropriate time within the first 6 months of opening the temporary school, whereby the travel habits of students and staff will be surveyed through a classroom based exercise.

6.3.5 The monitoring exercise will include :

- Classroom data collection of pupil travel mode to school for a one week period
- Data collection of staff and visitor travel mode to the school for a one week period
- Monitoring of ad-hoc parking on site and on the school link road.
- Any complaints made to the school from local residents with respect to school related parking off site.

6.3.6 A monitoring exercise will also be completed of the school link road during the first month of operation after opening. The intention would be to dissuade parents who are seen to be dropping pupils off along this route. This monitoring exercise could be conducted by school staff, or more likely, the existing parking enforcement company operating in Whitecliffe.

### 6.4 Review

6.4.1 Following monitoring, a review exercise will be completed that summarises the data collection described above into a monitoring report.

6.4.2 The report will analyse and comment upon the data collected and describe whether travel targets are being met. If targets are not being met it will describe what remedial measures, if any, may need to be implemented to achieve travel targets.

6.4.3 The school will circulate the monitoring report to staff, students, parents and KCC for review and comment.

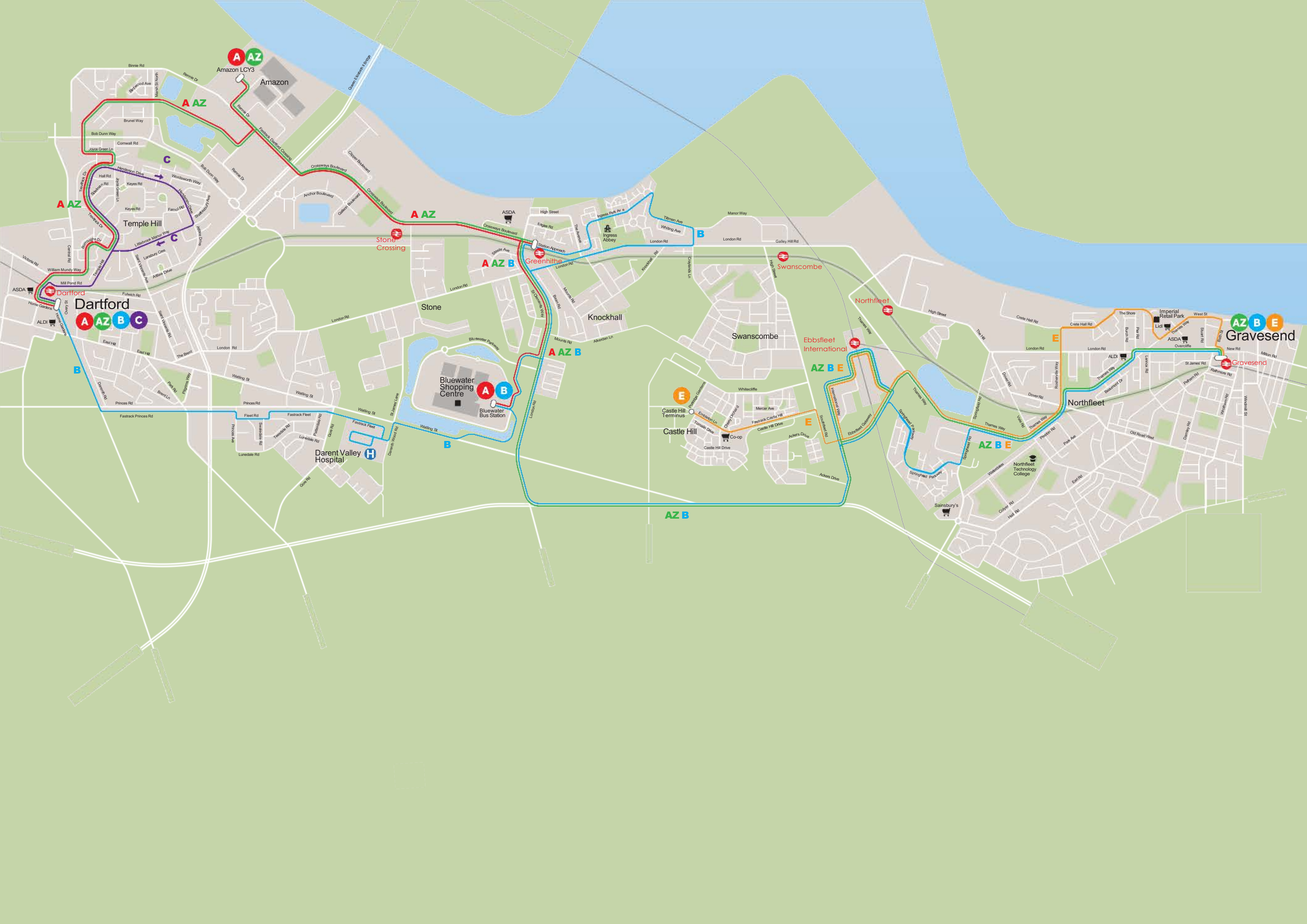
## 7 Travel Plan measures

7.1.1 A number of measures and actions will be promoted by the secondary school management team as follows.

- Assign a member of staff as a Travel Plan Co-ordinator (TPC) to oversee the implementation and upkeep of the Travel Plan.
- The TPC to liaise with relevant authority officers.
- Information to be disseminated to pupils and staff via a Travel Information Leaflet with respect to sustainable travel opportunities which will also advise parents and visitors and staff of the parking controls surrounding the site along with their enforcement.
- Raise awareness of travel issues such as road safety, pollution and the health benefits of sustainable modes of travel.
- Raise awareness about the increase in pupil independence and confidence that can be created by sustainable transport modes.
- Information relating to public transport, cycling, walking and car sharing to be displayed on notice boards and school website and to be kept up to date.
- Promote Car sharing by staff and pupils / parents.
- Promote use of the existing car club spaces at the Castle Hill Community Centre and on Portbridge Gardens.
- Periodically check that the private parking enforcement on the school link road covers the entirety of the link road through observation and discussions with the developer / enforcement company. NCP parking enforcement is used around Whitecliffe, their site visits can be increased once the Temporary School opens which should further aid in deterring parking.
- The Travel Plan and monitoring will be submitted to the KCC Jambusters website.

## **Appendix A**

### **Fastrack route map and timetable**



A AZ

A AZ

C

A AZ

C

A AZ

B

A AZ B

Dartford  
A AZ B C

Stone

Knockhall

Swanscombe

Ebbsfleet International  
AZ B E

Northfleet

Gravesend  
AZ B E

Bluewater Shopping Centre  
Bluewater Bus Station  
A B

Castle Hill Terminus  
E

Northfleet  
AZ B E

Gravesend

Darent Valley Hospital  
H

AZ B

Northfleet Technology College

Gravesend

**NEW ELECTRIC BUSES  
ARRIVING SOON!**



# Winter 2024

From 10 November 2024\*



EDITION 1



\*Please check the app or website for the latest timetables

**fastrack**  
Operated by **GoAhead**



# *fastrack* NETWORK MAP

- A** *Dartford to Bluewater*
- B** *Dartford to Gravesend*
- C** *Dartford to Temple Hill*
- E** *Castle Hill to Gravesend*
- AZ** *Amazon to Dartford*
- AZ** *Amazon to Gravesend*



# MORE FREQUENT

EVENING &  
WEEKEND BUSES

SINGLE  
FARES  
CAPPED

DOWNLOAD  
**OUR APP**  
OR VISIT OUR  
**WEBSITE**  
FOR MORE  
INFORMATION

Ingress Abbey

B

The Shore

Imperial Retail Park

E

Gravesend

Thames Way

AZ B E

Ebbsfleet

B

Castle Hill

Springhead Park



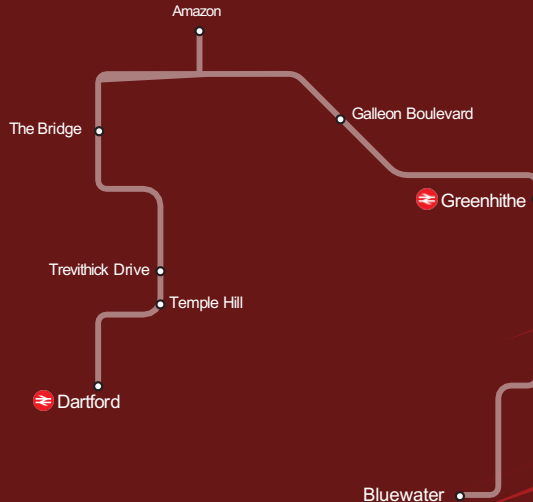
SCAN TO VIEW  
DETAILED MAPS

AZ B

# TIMETABLES

## ROUTE **A**

**DARTFORD ▶ BLUEWATER**  
**BLUEWATER ▶ DARTFORD**





# DARTFORD ► BLUEWATER

## Monday to Friday

Home Gardens for Dartford Station	0427	0457	0527	0550	then every	1938	1950	2003	then every	2303	2330	0000	then every	0400
The Bridge, Marsh Street	0436	0506	0536	0601		1949	2001	2013		2313	2337	0007		0407
Amazon LCY3	0441	0511	0541	0606		1954	2006	2018		2318	2342	0012		0412
Galleon Boulevard	0446	0516	0546	0611		1959	2011	2023		2323	2347	0017		0417
Greenhithe Station	0451	0521	0551	0616		2004	2016	2028		2328	2351	0021		0421
Bluewater Bus Station	0456	0526	0556	0621	2009	2021	2033	2333	2355	0025	0425			

# BLUEWATER ► DARTFORD

## Monday to Friday

Bluewater Bus Station	0500	0530	0550	0602	0614	0626	0638	0650	0702	then every 12 mins until	2302	2330	then every 30 mins until	0430
Greenhithe Station	0504	0534	0554	0606	0618	0630	0642	0654	0706		2306	2334		0434
Galleon Boulevard	0508	0538	0558	0610	0622	0634	0646	0658	0710		2310	2338		0438
Amazon LCY3	0513	0543	0603	0615	0627	0639	0651	0703	LB 0715		2315	2343		0443
The Bridge, Marsh Street	0518	0548	0608	0620	0632	0644	0656	0708	0712		0720	2320		2347
Home Gardens for Dartford Station	0527	0557	0617	0629	0641	0653	0705	0717	0721	0729	2329	2355	0455	

LB - Starts from Littlebrook at 0709

## DARTFORD ► BLUEWATER

### Saturdays

Home Gardens for Dartford Station	0427 0457 0527 0550	then every 12 mins until	1938 1950 2003	then every 12 mins until	2303 2330 0000	then every 30 mins until	0400
The Bridge, Marsh Street	0436 0506 0536 0601		1949 2001 2013		2313 2337 0007		0407
Amazon LCY3	0441 0511 0541 0606		1954 2006 2018		2318 2342 0012		0412
Galleon Boulevard	0446 0516 0546 0611		1959 2011 2023		2323 2347 0017		0417
Greenhithe Station	0451 0521 0551 0616		2004 2016 2028		2328 2351 0021		0421
Bluewater Bus Station	0456 0526 0556 0621		2009 2021 2033		2333 2355 0025		0425

## BLUEWATER ► DARTFORD

### Saturdays

Bluewater Bus Station	0500 0530 0550 0602 0614 0626 0638 0650 0702	then every 12 mins until	2302 2330	then every 30 mins until	0430
Greenhithe Station	0504 0534 0554 0606 0618 0630 0642 0654 0706		2306 2334		0434
Galleon Boulevard	0508 0538 0558 0610 0622 0634 0646 0658 0710		2310 2338		0438
Amazon LCY3	0513 0543 0603 0615 0627 0639 0651 0703 0715		2315 2343		0443
The Bridge, Marsh Street	0518 0548 0608 0620 0632 0644 0656 0708 0720		2320 2347		0447
Home Gardens for Dartford Station	0527 0557 0617 0629 0641 0653 0705 0717 0729		2329 2355		0455

# DARTFORD ► BLUEWATER

## Sundays

Home Gardens for Dartford Station	0430 0500 0530 0600 0630 0650 0702	then every 12 mins until	1950 2003	then every 12 mins until	2203 2230	then every 30 mins until	0400
The Bridge, Marsh Street	0437 0507 0537 0607 0637 0701 0713		2001 2013		2213 2237		0407
Amazon LCY3	0442 0512 0542 0612 0642 0706 0718		2006 2018		2218 2242		0412
Galleon Boulevard	0447 0517 0547 0617 0647 0711 0723		2011 2023		2223 2247		0417
Greenhithe Station	0451 0521 0551 0621 0651 0716 0728		2016 2028		2228 2251		0421
Bluewater Bus Station	0455 0525 0555 0625 0655 0721 0733		2021 2033		2233 2255		0425

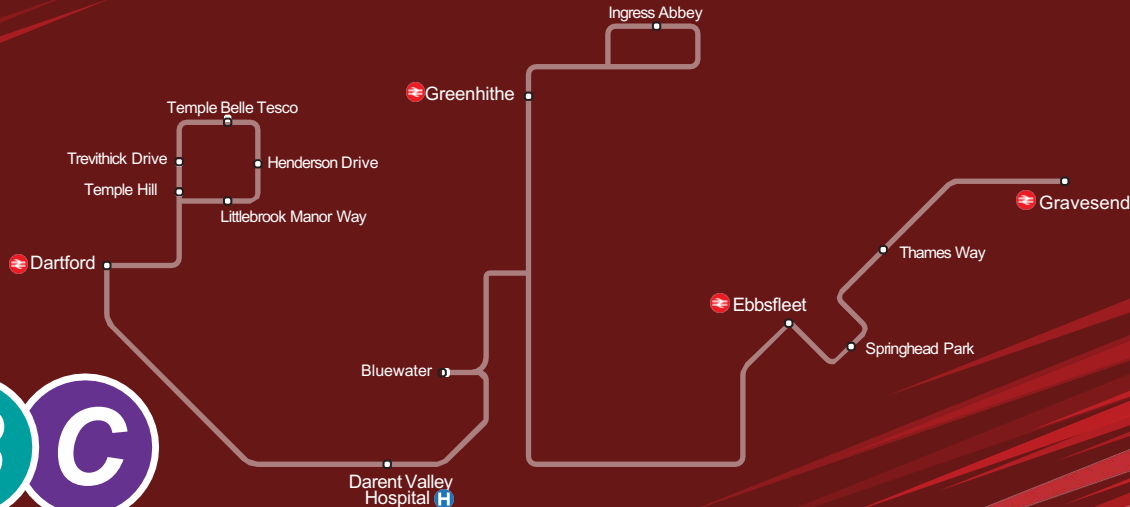
# BLUEWATER ► DARTFORD

## Sundays

Bluewater Bus Station	0502 0532 0602 0632 0702	then every 12 mins until	2202 2230	then every 30 mins until	0430
Greenhithe Station	0506 0536 0606 0636 0706		2206 2234		0434
Galleon Boulevard	0510 0540 0610 0640 0710		2210 2238		0438
Amazon LCY3	0515 0545 0615 0645 0715		2215 2243		0443
The Bridge, Marsh Street	0520 0550 0620 0650 0720		2220 2247		0447
Home Gardens for Dartford Station	0529 0559 0629 0659 0729		2229 2255		0455



# ROUTE **B** **C**



**GRAVESEND ▶ DARTFORD ▶ TEMPLE HILL**  
**TEMPLE HILL ▶ DARTFORD ▶ GRAVESEND**

# GRAVESEND ◀▶ DARTFORD ◀▶ TEMPLE HILL



## Monday to Friday

### Route B

Gravesend, Garrick Street	0430	0500	0530	0555	0608	0621	0633	0645	0658	0711	0724	0739	0754	0810	0826	0842	0858
Ebbsfleet International Railway Station	0443	0513	0543	0609	0622	0635	0647	0700	0713	0726	0741	0756	0811	0827	0842	0858	0914
Ingress Park, Ingress Abbey	0456	0526	0556	0624	0637	0651	0704	0718	0731	0746	0801	0816	0831	0846	0901	0916	0930
Greenhithe Station	0459	0529	0559	0627	0640	0655	0708	0722	0735	0750	0805	0820	0835	0850	0905	0920	0934
Bluewater Bus Station	0504	0535	0605	0633	0646	0701	0714	0728	0741	0756	0811	0826	0841	0856	0911	0926	0940
Darent Valley Hospital	0508	0539	0609	0637	0650	0705	0718	0733	0747	0802	0817	0832	0847	0902	0917	0932	0946
Home Gardens for Dartford Station	0517	0551	0622	0650	0703	0718	0733	0748	0803	0818	0833	0848	0902	0917	0932	0947	1001

### Route C

↓ ↓ ↓ ↓ ↓ ↓ ↓ ↓ ↓ ↓ ↓ ↓ ↓ ↓ ↓ ↓ ↓ ↓ ↓ ↓

Home Gardens for Dartford Station	0422	0452	0521	0541	0556	0611	0626	0640	0654	0707	0722	0737	0752	0807	0822	0837	0852	0906	0921	0936	0951	1005
Temple Belle Tesco	0429	0459	0528	0548	0603	0618	0633	0647	0701	0714	0729	0744	0759	0814	0829	0844	0859	0914	0929	0944	0959	1013
Home Gardens for Dartford Station	0438	0508	0538	0558	0613	0628	0643	0657	0712	0726	0741	0756	0811	0826	0841	0856	0911	0926	0941	0956	1011	1025

### Route B

↓ ↓ ↓ ↓ ↓ ↓ ↓ ↓ ↓ ↓ ↓ ↓ ↓ ↓ ↓ ↓ ↓ ↓ ↓ ↓

Home Gardens for Dartford Station	0442	0512	0542	0602	0617	0632	0647	0701	0716	0730	0745	0800	0815	0830	0845	0900	0915	0930	0945	1000	1015	1029
Darent Valley Hospital	0453	0523	0553	0613	0628	0643	0658	0713	0728	0743	0758	0813	0828	0843	0858	0913	0928	0943	0958	1013	1028	1042
Bluewater Bus Station	0458	0528	0559	0619	0634	0649	0704	0719	0734	0749	0804	0819	0834	0849	0904	0919	0934	0949	1004	1019	1034	1048
Greenhithe Station	0502	0532	0603	0624	0639	0654	0709	0724	0739	0754	0809	0825	0840	0855	0910	0925	0940	0955	1010	1025	1040	1054
Ingress Park, Ingress Abbey	0504	0534	0605	0626	0641	0656	0711	0726	0741	0756	0811	0827	0842	0857	0912	0927	0942	0957	1012	1027	1042	1056
Ebbsfleet International Railway Station	0517	0547	0618	0639	0654	0711	0726	0743	0758	0814	0830	0845	0900	0915	0928	0942	0957	1012	1027	1042	1057	1111
Gravesend, Garrick Street	0527	0557	0628	0650	0706	0723	0739	0758	0814	0830	0846	0900	0915	0930	0943	0956	1010	1024	1039	1054	1109	1123

**Route B continued**

Gravesend, Garrick Street	0914	0930	0946	1002	1017	1032	1047	1102	1117	1132	1147	1202	1217	1232	1247	1302	1317	1332	1346	1400	1415	1429
Ebbsfleet International Railway Station	0929	0944	1000	1016	1031	1046	1101	1116	1131	1146	1201	1216	1231	1246	1301	1316	1331	1346	1400	1414	1429	1444
Ingress Park, Ingress Abbey	0945	1000	1015	1031	1046	1101	1116	1131	1146	1201	1216	1231	1246	1301	1316	1331	1346	1401	1415	1429	1444	1459
Greenhithe Station	0948	1003	1018	1034	1049	1104	1119	1134	1149	1204	1219	1234	1249	1304	1319	1334	1349	1404	1418	1432	1447	1502
Bluewater Bus Station	0954	1009	1024	1040	1055	1110	1125	1140	1155	1210	1225	1240	1255	1310	1325	1340	1355	1410	1425	1438	1453	1508
Darent Valley Hospital	1000	1015	1030	1046	1101	1116	1131	1146	1201	1216	1231	1246	1301	1316	1331	1346	1401	1416	1431	1444	1459	1514
Home Gardens for Dartford Station	1015	1029	1044	1059	1114	1129	1144	1159	1214	1229	1244	1259	1314	1329	1344	1359	1414	1429	1444	1458	1513	1528

**Route C continued**

↓ ↓

Home Gardens for Dartford Station	1019	1033	1048	1103	1118	1133	1148	1203	1218	1233	1248	1303	1318	1333	1348	1403	1418	1433	1448	1502	1517	1532
Temple Belle Tesco	1027	1041	1056	1111	1126	1141	1156	1211	1226	1241	1256	1311	1326	1341	1356	1411	1426	1441	1456	1510	1525	1540
Home Gardens for Dartford Station	1039	1053	1108	1123	1138	1153	1208	1223	1238	1253	1308	1323	1338	1353	1408	1423	1438	1453	1508	1522	1536	1551

**Route B continued**

↓ ↓

Home Gardens for Dartford Station	1043	1057	1112	1127	1142	1157	1212	1227	1242	1257	1312	1327	1342	1357	1412	1427	1442	1457	1512	1526	1540	1555
Darent Valley Hospital	1056	1110	1125	1140	1155	1210	1225	1240	1255	1310	1325	1341	1356	1411	1426	1442	1457	1512	1528	1543	1558	1613
Bluewater Bus Station	1102	1116	1131	1146	1201	1216	1231	1246	1301	1316	1331	1347	1402	1417	1432	1448	1504	1519	1535	1551	1606	1621
Greenhithe Station	1108	1122	1137	1152	1207	1222	1237	1252	1307	1322	1337	1353	1408	1423	1438	1454	1510	1525	1541	1557	1612	1627
Ingress Park, Ingress Abbey	1110	1124	1139	1154	1209	1224	1239	1254	1309	1324	1339	1355	1410	1425	1440	1456	1513	1528	1544	1600	1615	1630
Ebbsfleet International Railway Station	1125	1139	1154	1209	1224	1239	1254	1309	1324	1339	1354	1410	1425	1440	1455	1511	1528	1544	1600	1616	1631	1646
Gravesend, Garrick Street	1137	1151	1206	1221	1236	1251	1306	1321	1336	1351	1406	1422	1438	1455	1511	1528	1545	1601	1616	1631	1646	1701

**Route B continued**

Gravesend, Garrick Street	1444	1459	1514	1528	1542	1557	1612	1627	1642	1657	1712	1728	1743	1758	1814	1829	1844	1859	1914	1930	1945	2000
Ebbsfleet International Railway Station	1459	1514	1529	1544	1559	1613	1628	1643	1658	1713	1728	1743	1758	1813	1828	1843	1858	1913	1928	1943	1958	2013
Ingress Park, Ingress Abbey	1514	1529	1544	1559	1614	1629	1644	1659	1714	1729	1744	1759	1814	1829	1844	1859	1914	1929	1943	1958	2012	2027
Greenhithe Station	1517	1532	1547	1602	1617	1632	1647	1702	1717	1732	1747	1802	1817	1832	1847	1902	1917	1932	1946	2001	2015	2030
Bluewater Bus Station	1523	1538	1553	1608	1623	1638	1653	1708	1723	1738	1753	1808	1823	1838	1853	1908	1923	1938	1952	2007	2021	2036
Darent Valley Hospital	1529	1544	1559	1614	1629	1644	1659	1714	1729	1744	1759	1814	1829	1843	1858	1913	1928	1943	1957	2012	2026	2041
Home Gardens for Dartford Station	1543	1558	1613	1628	1643	1658	1713	1728	1743	1758	1813	1828	1843	1856	1911	1926	1941	1956	2010	2025	2039	2054

**Route C continued**

↓ ↓

Home Gardens for Dartford Station	1547	1602	1617	1632	1647	1702	1717	1732	1747	1802	1817	1833	1847	1900	1915	1930	1945	2000	2014	2029	2043	2058
Temple Belle Tesco	1555	1610	1625	1640	1655	1710	1725	1740	1755	1810	1825	1841	1855	1907	1922	1937	1952	2007	2021	2036	2050	2105
Home Gardens for Dartford Station	1606	1621	1636	1651	1706	1721	1736	1751	1806	1821	1836	1852	1906	1918	1933	1948	2003	2017	2030	2045	2059	2114

**Route B continued**

↓ ↓

Home Gardens for Dartford Station	1610	1625	1640	1655	1710	1725	1740	1755	1810	1825	1840	1856	1910	1924	1937	1952	2006	2021	2035	2049	2103	2118
Darent Valley Hospital	1627	1641	1656	1711	1726	1741	1756	1811	1826	1840	1854	1910	1923	1937	1950	2004	2018	2033	2046	2059	2113	2128
Bluewater Bus Station	1635	1649	1704	1718	1733	1748	1802	1817	1832	1846	1900	1915	1928	1942	1955	2009	2023	2038	2051	2104	2118	2133
Greenhithe Station	1641	1655	1710	1724	1739	1754	1808	1823	1838	1852	1906	1920	1933	1947	2000	2014	2028	2043	2056	2109	2122	2137
Ingress Park, Ingress Abbey	1644	1658	1713	1727	1741	1756	1810	1825	1840	1854	1908	1922	1935	1949	2002	2016	2030	2045	2058	2111	2124	2139
Ebbsfleet International Railway Station	1701	1716	1732	1746	1800	1815	1828	1840	1855	1909	1923	1937	1950	2004	2017	2031	2045	2100	2112	2125	2137	2152
Gravesend, Garrick Street	1716	1731	1746	1800	1814	1829	1841	1853	1908	1921	1935	1949	2002	2016	2029	2042	2056	2111	2123	2136	2148	2203

**Route B continued**

Gravesend, Garrick Street	2015	2030	2046	2102	2117	2132	2147	2202	2217	2232	2247	2302	2332	0002	0032
Ebbsfleet International Railway Station	2028	2042	2058	2114	2129	2144	2159	2214	2229	2244	2259	2314	2344	0013	0043
Ingress Park, Ingress Abbey	2042	2056	2112	2128	2143	2158	2213	2228	2243	2258	2313	2328	2358	0027	0057
Greenhithe Station	2045	2059	2115	2130	2145	2200	2215	2230	2245	2300	2315	2330	0000	0029	0059
Bluewater Bus Station	2051	2105	2121	2136	2151	2206	2221	2236	2251	2305	2320	2335	0005	0034	0104
Darent Valley Hospital	2056	2110	2126	2141	2156	2211	2226	2241	2256	2309	2324	2339	0009	0037	0107
Home Gardens for Dartford Station	2109	2123	2138	2152	2207	2222	2237	2252	2307	2319	2334	2349	0018	0046	0116

**Route C continued**

↓ ↓ ↓ ↓ ↓ ↓ ↓ ↓ ↓ ↓ ↓ ↓ ↓ ↓ ↓ ↓

Home Gardens for Dartford Station	2113	2127	2142	2156	2211	2226	2241	2256	2311	2323	2338	2353	0023	0047	0117
Temple Belle Tesco	2120	2134	2149	2203	2218	2233	2248	2303	2318	2330	2345	0000	0030	0054	0124
Home Gardens for Dartford Station	2129	2143	2158	2212	2227	2242	2257	2312	2327	2338	2353	0008	0038	0102	0132

**Route B continued**

↓ ↓ ↓ ↓ ↓ ↓ ↓ ↓ ↓ ↓ ↓ ↓ ↓ ↓ ↓ ↓

Home Gardens for Dartford Station	2133	2147	2202	2216	2231	2246	2301	2316	2342	0012	0042
Darent Valley Hospital	2143	2157	2212	2226	2241	2256	2311	2326	2351	0021	0051
Bluewater Bus Station	2148	2202	2217	2231	2246	2301	2316	2331	2356	0026	0056
Greenhithe Station	2152	2206	2221	2235	2250	2305	2320	2335	0000	0030	0100
Ingress Park, Ingress Abbey	2154	2208	2223	2237	2252	2307	2322	2337	0002	0032	0102
Ebbsfleet International Railway Station	2207	2221	2236	2250	2305	2320	2335	2350	0014	0044	0114
Gravesend, Garrick Street	2218	2232	2247	2301	2316	2330	2345	0000	0024	0054	0124

↓ - Through journey using same vehicle. Passengers may stay on the vehicle and through fares apply.



# GRAVESEND ◀▶ DARTFORD ◀▶ TEMPLE HILL



## Saturdays

### Route B

Gravesend, Garrick Street	0430	0500	0530	0551	0606	0621	0636	0651	0706	0721	0736	0750	0805	0820	0835	0850	0904
Ebbsfleet International Railway Station	0443	0513	0543	0604	0619	0634	0649	0704	0719	0734	0749	0803	0818	0833	0848	0904	0918
Ingress Park, Ingress Abbey	0456	0526	0556	0619	0634	0649	0704	0719	0734	0749	0804	0818	0833	0848	0903	0919	0933
Greenhithe Station	0459	0529	0559	0622	0637	0652	0707	0722	0737	0752	0807	0821	0836	0851	0906	0922	0936
Bluewater Bus Station	0504	0534	0604	0629	0644	0659	0714	0729	0744	0759	0814	0828	0843	0858	0913	0928	942
Darent Valley Hospital	0508	0538	0608	0634	0649	0704	0719	0734	0749	0804	0819	0833	0848	0903	0918	0933	0948
Home Gardens for Dartford Station	0518	0550	0618	0646	0701	0716	0734	0746	0801	0816	0831	0846	0901	0916	0931	0946	1001

### Route C

	↓	↓	↓	↓	↓	↓	↓	↓	↓	↓	↓	↓	↓	↓	↓	↓	↓					
Home Gardens for Dartford Station	0422	0452	0522	0537	0552	0607	0622	0637	0651	0705	0720	0735	0750	0805	0820	0835	0850	0905	0920	0935	0950	1005
Temple Belle Tesco	0429	0459	0529	0544	0559	0614	0629	0644	0658	0712	0727	0742	0757	0812	0827	0842	0857	0912	0927	0942	0957	1012
Home Gardens for Dartford Station	0438	0508	0538	0553	0608	0623	0638	0653	0708	0723	0738	0753	0808	0823	0838	0853	0908	0923	0938	0953	1008	1023

### Route B

	↓	↓	↓	↓	↓	↓	↓	↓	↓	↓	↓	↓	↓	↓	↓	↓	↓					
Home Gardens for Dartford Station	0442	0512	0542	0557	0612	0627	0642	0657	0712	0727	0742	0757	0812	0827	0842	0857	0912	0927	0942	0957	1012	1027
Darent Valley Hospital	0453	0523	0553	0609	0624	0639	0654	0709	0724	0739	0754	0809	0824	0839	0854	0909	0924	0939	0954	1009	1024	1039
Bluewater Bus Station	0458	0528	0559	0615	0630	0645	0700	0715	0730	0745	0800	0815	0830	0845	0900	0915	0930	0945	1000	1015	1030	1045
Greenhithe Station	0502	0532	0603	0619	0634	0649	0705	0721	0736	0751	0806	0821	0836	0851	0906	0921	0936	0951	1006	1021	1036	1051
Ingress Park, Ingress Abbey	0504	0534	0605	0621	0636	0651	0707	0723	0738	0753	0808	0823	0838	0853	0908	0923	0938	0953	1008	1023	1038	1053
Ebbsfleet International Railway Station	0517	0547	0618	0634	0650	0705	0721	0738	0753	0808	0823	0838	0853	0908	0923	0938	0953	1008	1023	1038	1053	1108
Gravesend, Garrick Street	0527	0557	0628	0645	0701	0716	0732	0750	0805	0820	0835	0850	0905	0920	0935	0950	1005	1020	1035	1050	1105	1120

**Route B continued**

Gravesend, Garrick Street	0917	0932	0947	1002	1017	1032	1047	1102	1117	1132	1147	1202	1217	1232	1247	1302	1317	1332	1347	1402	1417	1432
Ebbsfleet International Railway Station	0931	0946	1001	1016	1031	1046	1101	1116	1131	1146	1201	1216	1231	1246	1301	1316	1331	1346	1401	1416	1431	1446
Ingress Park, Ingress Abbey	0946	1001	1016	1031	1046	1101	1116	1131	1146	1201	1216	1231	1246	1301	1316	1331	1346	1401	1416	1431	1446	1501
Greenhithe Station	0949	1004	1019	1034	1049	1104	1119	1134	1149	1204	1219	1234	1249	1304	1319	1334	1349	1404	1419	1434	1449	1504
Bluewater Bus Station	0955	1010	1025	1040	1055	1110	1125	1140	1155	1210	1225	1240	1255	1310	1325	1340	1355	1410	1425	1439	1455	1510
Darent Valley Hospital	1001	1016	1031	1046	1101	1116	1131	1146	1201	1216	1231	1246	1301	1316	1331	1346	1401	1416	1431	1445	1501	1516
Home Gardens for Dartford Station	1014	1029	1044	1059	1114	1129	1144	1159	1214	1229	1244	1259	1314	1329	1344	1359	1414	1429	1444	1459	1514	1529

**Route C continued**

↓ ↓

Home Gardens for Dartford Station	1018	1033	1048	1103	1118	1133	1148	1203	1218	1233	1248	1303	1318	1333	1348	1403	1418	1433	1448	1503	1518	1533
Temple Belle Tesco	1026	1041	1056	1111	1126	1141	1156	1211	1226	1241	1256	1311	1326	1341	1356	1411	1426	1441	1456	1511	1526	1541
Home Gardens for Dartford Station	1038	1053	1108	1123	1138	1153	1208	1223	1238	1253	1308	1323	1338	1353	1408	1423	1438	1453	1508	1523	1538	1553

**Route B continued**

↓ ↓

Home Gardens for Dartford Station	1042	1057	1112	1127	1142	1157	1212	1227	1242	1257	1312	1327	1342	1357	1412	1427	1442	1457	1512	1527	1542	1557
Darent Valley Hospital	1054	1109	1124	1139	1154	1209	1224	1239	1254	1309	1324	1339	1354	1409	1424	1439	1454	1509	1524	1539	1554	1609
Bluewater Bus Station	1100	1115	1130	1145	1200	1215	1230	1245	1300	1315	1330	1345	1400	1415	1430	1445	1500	1515	1530	1545	1600	1615
Greenhithe Station	1106	1121	1136	1151	1206	1221	1236	1251	1306	1321	1336	1351	1406	1421	1436	1451	1506	1521	1536	1551	1606	1621
Ingress Park, Ingress Abbey	1108	1123	1138	1153	1208	1223	1238	1253	1308	1323	1338	1353	1408	1423	1438	1453	1508	1523	1538	1553	1608	1623
Ebbsfleet International Railway Station	1123	1138	1153	1208	1223	1238	1253	1308	1323	1338	1353	1408	1423	1438	1453	1508	1523	1538	1553	1608	1623	1638
Gravesend, Garrick Street	1135	1150	1205	1220	1235	1250	1305	1320	1335	1350	1405	1420	1435	1450	1505	1520	1535	1550	1605	1620	1635	1650

**Route B continued**

Gravesend, Garrick Street	1447	1502	1517	1532	1547	1602	1617	1632	1647	1702	1717	1732	1747	1802	1817	1831	1845	1900	1915	1930	1945	2000
Ebbsfleet International Railway Station	1501	1516	1531	1546	1601	1616	1631	1646	1701	1716	1731	1746	1801	1816	1831	1845	1859	1914	1929	1944	1959	2014
Ingress Park, Ingress Abbey	1516	1531	1546	1601	1616	1631	1646	1701	1716	1731	1746	1801	1816	1830	1845	1859	1913	1928	1943	1958	2013	2028
Greenhithe Station	1519	1534	1549	1604	1619	1634	1649	1704	1719	1734	1749	1804	1819	1833	1848	1902	1916	1931	1946	2001	2016	2031
Bluewater Bus Station	1525	1540	1555	1610	1625	1640	1655	1710	1725	1740	1755	1810	1825	1839	1854	1908	1922	1937	1952	2007	2022	2037
Darent Valley Hospital	1531	1546	1601	1616	1631	1646	1701	1716	1731	1746	1801	1816	1831	1845	1900	1914	1928	1943	1957	2012	2027	2042
Home Gardens for Dartford Station	1544	1559	1614	1629	1644	1659	1714	1729	1744	1759	1814	1829	1844	1858	1913	1927	1941	1956	2010	2025	2040	2055

**Route C continued**

↓	↓	↓	↓	↓	↓	↓	↓	↓	↓	↓	↓	↓	↓	↓	↓	↓	↓	↓	↓	↓	↓	↓
---	---	---	---	---	---	---	---	---	---	---	---	---	---	---	---	---	---	---	---	---	---	---

Home Gardens for Dartford Station	1548	1603	1618	1633	1648	1703	1718	1733	1748	1803	1818	1833	1848	1902	1917	1931	1945	2000	2014	2029	2044	2059
Temple Belle Tesco	1556	1611	1626	1641	1656	1711	1726	1741	1756	1811	1826	1841	1856	1910	1925	1939	1952	2007	2021	2036	2051	2106
Home Gardens for Dartford Station	1608	1623	1638	1653	1708	1723	1738	1753	1808	1823	1838	1853	1908	1922	1937	1951	2003	2017	2030	2045	2100	2115

**Route B continued**

↓	↓	↓	↓	↓	↓	↓	↓	↓	↓	↓	↓	↓	↓	↓	↓	↓	↓	↓	↓	↓	↓	↓
---	---	---	---	---	---	---	---	---	---	---	---	---	---	---	---	---	---	---	---	---	---	---

Home Gardens for Dartford Station	1612	1627	1642	1657	1712	1727	1742	1757	1812	1827	1842	1857	1912	1926	1941	1955	2007	2021	2034	2049	2104	2119
Darent Valley Hospital	1624	1639	1654	1709	1724	1739	1754	1809	1824	1839	1854	1908	1923	1937	1952	2006	2018	2031	2044	2059	2114	2129
Bluewater Bus Station	1630	1645	1700	1715	1730	1745	1800	1815	1830	1845	1900	1913	1928	1942	1957	2011	2023	2036	2049	2104	2119	2134
Greenhithe Station	1636	1651	1706	1721	1736	1751	1806	1820	1835	1850	1905	1918	1933	1947	2002	2015	2027	2040	2053	2108	2123	2138
Ingress Park, Ingress Abbey	1638	1653	1708	1723	1738	1753	1808	1822	1837	1852	1907	1920	1935	1949	2004	2017	2029	2042	2055	2110	2125	2140
Ebbsfleet International Railway Station	1653	1708	1723	1738	1753	1808	1823	1837	1852	1907	1922	1935	1950	2004	2019	2031	2043	2056	2109	2124	2139	2154
Gravesend, Garrick Street	1705	1720	1735	1750	1805	1820	1834	1848	1903	1918	1933	1946	2001	2015	2030	2042	2054	2107	2120	2135	2150	2204

**Route B continued**

Gravesend, Garrick Street	2015	2030	2045	2101	2116	2132	2147	2202	2217	2232	2247	2302	2332	0002	0032
Ebbsfleet International Railway Station	2028	2042	2057	2113	2128	2144	2159	2214	2229	2244	2259	2314	2344	0013	0043
Ingress Park, Ingress Abbey	2042	2056	2111	2127	2142	2158	2213	2228	2243	2258	2313	2328	2358	0027	0057
Greenhithe Station	2045	2059	2114	2129	2144	2200	2215	2230	2245	2300	2315	2330	0000	0029	0059
Bluewater Bus Station	2051	2105	2120	2135	2150	2206	2221	2236	2251	2305	2320	2335	0005	0034	0104
Darent Valley Hospital	2056	2110	2125	2140	2155	2211	2226	2241	2256	2309	2324	2339	0009	0037	0107
Home Gardens for Dartford Station	2109	2123	2138	2152	2207	2222	2237	2252	2307	2319	2334	2349	0018	0046	0116

**Route C continued**

↓ ↓ ↓ ↓ ↓ ↓ ↓ ↓ ↓ ↓ ↓ ↓ ↓ ↓ ↓

Home Gardens for Dartford Station	2113	2127	2142	2156	2211	2226	2241	2256	2311	2323	2338	2353	0023	0047	0117
Temple Belle Tesco	2120	2134	2149	2203	2218	2233	2248	2303	2318	2330	2345	0000	0030	0054	0124
Home Gardens for Dartford Station	2129	2143	2158	2212	2227	2242	2257	2312	2327	2338	2353	0008	0038	0102	0132

**Route B continued**

↓ ↓ ↓ ↓ ↓ ↓ ↓ ↓ ↓ ↓ ↓

Home Gardens for Dartford Station	2133	2147	2201	2216	2231	2246	2301	2316	2342	0012	0042
Darent Valley Hospital	2143	2157	2211	2226	2241	2256	2311	2326	2351	0021	0051
Bluewater Bus Station	2148	2202	2216	2231	2246	2301	2316	2331	2356	0026	0056
Greenhithe Station	2152	2206	2220	2235	2250	2305	2320	2335	0000	0030	0100
Ingress Park, Ingress Abbey	2154	2208	2222	2237	2252	2307	2322	2337	0002	0032	0102
Ebbsfleet International Railway Station	2208	2222	2235	2250	2305	2320	2335	2350	0015	0045	0115
Gravesend, Garrick Street	2218	2232	2245	2300	2315	2330	2345	0000	0025	0055	0125

↓ - Through journey using same vehicle. Passengers may stay on the vehicle and through fares apply.

# GRAVESEND ◀▶ DARTFORD ◀▶ TEMPLE HILL



## Sundays

### Route B

Gravesend, Garrick Street	0558	0628	0658	0712	0725	0740	0755	0809	0824	0838	0852	0906	0919	0933	0948	1003	1018
Ebbsfleet International Railway Station	0611	0641	0711	0726	0739	0754	0809	0823	0838	0852	0906	0920	0933	0947	1002	1017	1032
Ingress Park, Ingress Abbey	0626	0656	0726	0741	0754	0809	0824	0838	0853	0907	0921	0935	0948	1002	1017	1032	1047
Greenhithe Station	0629	0659	0729	0744	0757	0812	0827	0841	0856	0910	0924	0938	0951	1005	1020	1035	1050
Bluewater Bus Station	0634	0704	0734	0749	0803	0818	0833	0847	0902	0916	0930	0944	0957	1011	1026	1041	1056
Darent Valley Hospital	0638	0708	0738	0753	0807	0822	0837	0851	0906	0920	0934	0949	1002	1017	1032	1047	1102
Home Gardens for Dartford Station	0648	0718	0748	0803	0818	0833	0848	0902	0917	0931	0945	1000	1014	1029	1044	1059	1114

### Route C

Home Gardens for Dartford Station	0552	0622	0652	0707	0722	0737	0752	0807	0822	0837	0852	0907	0921	0935	0949	1004	1018	1033	1048	1103	1118
Temple Belle Tesco	0559	0629	0659	0714	0729	0744	0759	0814	0829	0844	0859	0914	0928	0942	0956	1011	1026	1041	1056	1111	1126
Home Gardens for Dartford Station	0608	0638	0708	0723	0738	0753	0808	0823	0838	0853	0908	0923	0938	0953	1008	1023	1038	1053	1108	1123	1138

### Route B

Home Gardens for Dartford Station	0612	0642	0712	0727	0742	0757	0812	0827	0842	0857	0912	0927	0942	0957	1012	1027	1042	1057	1112	1127	1142
Darent Valley Hospital	0624	0654	0724	0739	0754	0809	0824	0839	0854	0909	0924	0939	0954	1009	1024	1039	1054	1109	1124	1139	1154
Bluewater Bus Station	0630	0700	0730	0745	0800	0815	0830	0845	0900	0915	0930	0945	1000	1015	1030	1045	1100	1115	1130	1145	1200
Greenhithe Station	0634	0705	0736	0751	0806	0821	0836	0851	0906	0921	0936	0951	1006	1021	1036	1051	1106	1121	1136	1151	1206
Ingress Park, Ingress Abbey	0636	0707	0738	0753	0808	0823	0838	0853	0908	0923	0938	0953	1008	1023	1038	1053	1108	1123	1138	1153	1208
Ebbsfleet International Railway Station	0650	0721	0753	0808	0823	0838	0853	0908	0923	0938	0953	1008	1023	1038	1053	1108	1123	1138	1153	1208	1223
Gravesend, Garrick Street	0701	0732	0805	0820	0835	0850	0905	0920	0935	0950	1005	1020	1035	1050	1105	1120	1135	1150	1205	1220	1235

**Route B continued**

Gravesend, Garrick Street	1033	1047	1102	1117	1132	1147	1202	1217	1232	1247	1302	1317	1332	1347	1402	1417	1432	1447	1502	1517	1532	1547
Ebbsfleet International Railway Station	1047	1101	1116	1131	1146	1201	1216	1231	1246	1301	1316	1331	1346	1401	1416	1431	1446	1501	1516	1531	1546	1601
Ingress Park, Ingress Abbey	1102	1116	1131	1146	1201	1216	1231	1246	1301	1316	1331	1346	1401	1416	1431	1446	1501	1516	1531	1546	1601	1616
Greenhithe Station	1105	1119	1134	1149	1204	1219	1234	1249	1304	1319	1334	1349	1404	1419	1434	1449	1504	1519	1534	1549	1604	1619
Bluewater Bus Station	1111	1125	1140	1155	1210	1225	1240	1255	1310	1325	1340	1355	1410	1425	1440	1455	1510	1525	1540	1555	1610	1625
Darent Valley Hospital	1117	1131	1146	1201	1216	1231	1246	1301	1316	1331	1346	1401	1416	1431	1446	1501	1516	1531	1546	1601	1616	1631
Home Gardens for Dartford Station	1129	1144	1159	1214	1229	1244	1259	1314	1329	1344	1359	1414	1429	1444	1459	1514	1529	1544	1559	1614	1629	1644

**Route C continued**

	↓	↓	↓	↓	↓	↓	↓	↓	↓	↓	↓	↓	↓	↓	↓	↓	↓	↓	↓	↓	↓	↓
Home Gardens for Dartford Station	1133	1148	1203	1218	1233	1248	1303	1318	1333	1348	1403	1418	1433	1448	1503	1518	1533	1548	1603	1618	1633	1648

Temple Belle Tesco	1141	1156	1211	1226	1241	1256	1311	1326	1341	1356	1411	1426	1441	1456	1511	1526	1541	1556	1611	1626	1641	1656
Home Gardens for Dartford Station	1153	1208	1223	1238	1253	1308	1323	1338	1353	1408	1423	1438	1453	1508	1523	1538	1553	1608	1623	1638	1653	1708

**Route B continued**

	↓	↓	↓	↓	↓	↓	↓	↓	↓	↓	↓	↓	↓	↓	↓	↓	↓	↓	↓	↓	↓	↓
Home Gardens for Dartford Station	1157	1212	1227	1242	1257	1312	1327	1342	1357	1412	1427	1442	1457	1512	1527	1542	1557	1612	1627	1642	1657	1712

Darent Valley Hospital	1209	1224	1239	1254	1309	1324	1339	1354	1409	1424	1439	1454	1509	1524	1539	1554	1609	1624	1639	1654	1709	1724
Bluewater Bus Station	1215	1230	1245	1300	1315	1330	1345	1400	1415	1430	1445	1500	1515	1530	1545	1600	1615	1630	1645	1700	1715	1730
Greenhithe Station	1221	1236	1251	1306	1321	1336	1351	1406	1421	1436	1451	1506	1521	1536	1551	1606	1621	1636	1651	1706	1721	1736
Ingress Park, Ingress Abbey	1223	1238	1253	1308	1323	1338	1353	1408	1423	1438	1453	1508	1523	1538	1553	1608	1623	1638	1653	1708	1723	1738
Ebbsfleet International Railway Station	1238	1253	1308	1323	1338	1353	1408	1423	1438	1453	1508	1523	1538	1553	1608	1623	1638	1653	1708	1723	1738	1753
Gravesend, Garrick Street	1250	1305	1320	1335	1350	1405	1420	1435	1450	1505	1520	1535	1550	1605	1620	1635	1650	1705	1720	1735	1750	1805

**Route B continued**

Gravesend, Garrick Street	1602	1617	1632	1647	1702	1717	1732	1747	1802	1817	1832	1847	1902	1917	1932	1947	2002	2017	2032	2047	2102	2117
Ebbsfleet International Railway Station	1616	1631	1646	1701	1716	1731	1746	1801	1816	1831	1846	1901	1916	1931	1945	2000	2015	2030	2045	2100	2115	2129
Ingress Park, Ingress Abbey	1631	1646	1701	1716	1731	1746	1801	1816	1830	1845	1900	1915	1930	1945	1959	2014	2029	2044	2059	2114	2129	2143
Greenhithe Station	1634	1649	1704	1719	1734	1749	1804	1819	1833	1848	1903	1918	1933	1948	2002	2017	2032	2047	2102	2117	2132	2146
Bluewater Bus Station	1640	1655	1710	1725	1740	1755	1810	1825	1839	1854	1909	1924	1938	1953	2007	2022	2037	2052	2107	2122	2137	2151
Darent Valley Hospital	1646	1701	1716	1731	1746	1801	1816	1830	1844	1859	1914	1929	1943	1958	2012	2027	2041	2056	2111	2126	2141	2155
Home Gardens for Dartford Station	1659	1714	1729	1744	1758	1813	1827	1841	1855	1910	1924	1939	1953	2008	2022	2037	2051	2106	2121	2136	2151	2205

**Route C continued**

↓ ↓

Home Gardens for Dartford Station	1703	1718	1733	1748	1802	1817	1831	1845	1859	1914	1928	1943	1957	2012	2026	2041	2055	2110	2125	2140	2155	2209
Temple Belle Tesco	1711	1726	1741	1756	1810	1824	1838	1852	1906	1921	1935	1950	2004	2019	2033	2048	2102	2117	2132	2147	2202	2216
Home Gardens for Dartford Station	1723	1738	1753	1808	1822	1836	1850	1904	1917	1931	1944	1959	2013	2028	2042	2057	2111	2126	2141	2155	2210	2224

**Route B continued**

↓ ↓

Home Gardens for Dartford Station	1727	1742	1757	1812	1826	1840	1854	1908	1921	1935	1948	2003	2017	2032	2046	2101	2115	2130	2145	2159	2214
Darent Valley Hospital	1739	1754	1809	1824	1838	1852	1906	1920	1932	1946	1959	2014	2028	2042	2056	2111	2125	2139	2154	2208	2223
Bluewater Bus Station	1745	1800	1815	1830	1844	1858	1911	1925	1937	1951	2004	2019	2033	2047	2101	2116	2130	2144	2159	2213	2228
Greenhithe Station	1751	1806	1821	1836	1850	1903	1916	1929	1941	1955	2008	2023	2037	2051	2105	2120	2134	2148	2203	2217	2232
Ingress Park, Ingress Abbey	1753	1808	1823	1838	1852	1905	1918	1931	1943	1957	2010	2025	2039	2053	2107	2122	2136	2150	2205	2219	2234
Ebbsfleet International Railway Station	1808	1823	1838	1853	1907	1920	1933	1946	1958	2012	2025	2040	2053	2107	2121	2136	2150	2204	2218	2232	2247
Gravesend, Garrick Street	1820	1835	1850	1905	1919	1932	1945	1958	2010	2024	2037	2052	2104	2118	2132	2147	2200	2214	2228	2242	2257

## Route B continued

Gravesend, Garrick Street	2132	2147	2203	2233	2303
Ebbsfleet International Railway Station	2143	2158	2213	2243	2313
Ingress Park, Ingress Abbey	2157	2212	2227	2257	2327
Greenhithe Station	2200	2215	2230	2300	2330
Bluewater Bus Station	2205	2220	2235	2305	2335
Darent Valley Hospital	2209	2224	2239	2309	2339
Home Gardens for Dartford Station	2219	2234	2249	2318	2348

## Route C continued

	↓	↓	↓	↓	↓
Home Gardens for Dartford Station	2223	2238	2253	2320	2350
Temple Belle Tesco	2230	2245	2300	2327	2357
Home Gardens for Dartford Station	2238	2253	2308	2335	0005

## Route B continued

	↓	↓
Home Gardens for Dartford Station	2242	2312
Darent Valley Hospital	2251	2321
Bluewater Bus Station	2256	2326
Greenhithe Station	2300	2330
Ingress Park, Ingress Abbey	2302	2332
Ebbsfleet International Railway Station	2315	2345
Gravesend, Garrick Street	2325	2355



**SCAN HERE TO  
PLAN YOUR JOURNEY**

↓ - Through journey using same vehicle. Passengers may stay on the vehicle and through fares apply.





**LAUNCHING  
SPRING 2025**



# ***NEW ELECTRIC BUSES ARRIVING SOON!***

*Driving positive change  
for the future*

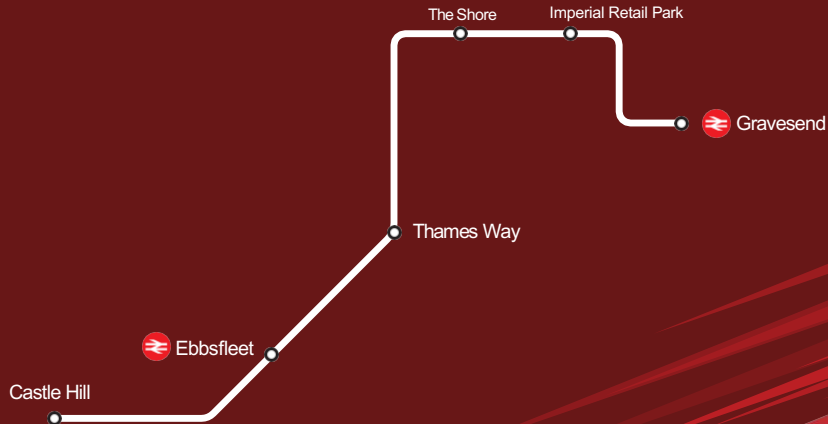


***[www.kent-fastrack.co.uk](http://www.kent-fastrack.co.uk)***



# ROUTE

**GRAVESEND ▶ CASTLE HILL**  
**CASTLE HILL ▶ GRAVESEND**



# GRAVESEND ► CASTLE HILL

## Monday to Friday

Gravesend, Garrick Street	0605	0705	1635	1705	1738	1808	1838	1908	1935	2005	2035	2135	2235	2335	0005
Imperial Business & Retail Park	0610	0710	1640	1710	1743	1813	1843	1913	1940	2010	2040	2140	2240	2340	0010
The Shore	0612	0712	1642	1712	1745	1815	1845	1915	1942	2012	2042	2142	2242	2342	0012
Thames Way, Springhead Road	0615	0715	1645	1715	1748	1818	1848	1918	1945	2015	2045	2145	2245	2345	0015
Ebbsfleet International Station	0618	0718	1648	1718	1751	1821	1851	1921	1948	2018	2048	2148	2248	2348	0018
Castle Hill Terminus	0624	0724	1654	1724	1757	1827	1857	1927	1954	2024	2054	2154	2254	2354	0024

t an eve y  
 30 mi s u ntil

# CASTLE HILL ► GRAVESEND

## Monday to Friday

Castle Hill Terminus	0532	0632	2002	2102	2202	2302
Ebbsfleet International Station	0539	0639	2009	2109	2209	2309
Thames Way, Springhead Road	0542	0642	2012	2112	2212	2312
The Shore	0546	0646	2016	2116	2216	2316
Imperial Business & Retail Park	0548	0648	2018	2118	2218	2318
Gravesend, Garrick Street	0552	0652	2022	2122	2222	2322

t an eve y  
 30 mi s u ntil

## GRAVESEND ▶ CASTLE HILL

### Saturdays

Gravesend, Garrick Street	0605 0705	t an eve y 30 mi s u tfl	1935	2005	2035	2135	2235	2335	0005
Imperial Business & Retail Park	0610 0710		1940	2010	2040	2140	2240	2340	0010
The Shore	0612 0712		1942	2012	2042	2142	2242	2342	0012
Thames Way, Springhead Road	0615 0715		1945	2015	2045	2145	2245	2345	0015
Ebbsfleet International Station	0618 0718		1948	2018	2048	2148	2248	2348	0018
Castle Hill Terminus	0624 0724		1954	2024	2054	2154	2254	2354	0024

## CASTLE HILL ▶ GRAVESEND

### Saturdays

Castle Hill Terminus	0532 0632	t an eve y 30 mi s u tfl	2002	2102	2202	2302
Ebbsfleet International Station	0539 0639		2009	2109	2209	2309
Thames Way, Springhead Road	0542 0642		2012	2112	2212	2312
The Shore	0546 0646		2016	2116	2216	2316
Imperial Business & Retail Park	0548 0648		2018	2118	2218	2318
Gravesend, Garrick Street	0552 0652		2022	2122	2222	2322



**SCAN TO  
VIEW OUR FARES**

# GRAVESEND ▶ CASTLE HILL

## Sundays

Gravesend, Garrick Street	0735 0835	then every 60 mins until	2335
Imperial Business & Retail Park	0740 0840		2340
The Shore	0742 0842		2342
Thames Way, Springhead Road	0745 0845		2345
Ebbsfleet International Station	0748 0848		2348
Castle Hill Terminus	0754 0854		2354

# CASTLE HILL ▶ GRAVESEND

## Sundays

Castle Hill Terminus	0702	then every 60 mins until	2302
Ebbsfleet International Station	0709		2309
Thames Way, Springhead Road	0712		2312
The Shore	0716		2316
Imperial Business & Retail Park	0718		2318
Gravesend, Garrick Street	0722		2322





**ROUTE** 

**GRAVESEND ▶ AMAZON LCY3 ▶ DARTFORD**  
**DARTFORD ▶ AMAZON LCY3 ▶ GRAVESEND**

## DARTFORD ▶ AMAZON LCY3 ▶ GRAVESEND



### Monday to Friday

Home Gardens for Dartford Station	0734 0900 1746	1900 1934
The Bridge, Marsh Street	0742 0908 1754	1908 1942
Amazon LCY3	0455 0610 0640 0750 0916 1803 1840 1916 1950 2010	
Galleon Boulevard	0500 0615 0645	1845 2015
Greenhithe Station	0505 0620 0650	1850 2019
Ebbsfleet International Railway Station	0517 0632 0702	1902 2031
Thames Way, Springhead Road	0520 0635 0705	1905 2034
Gravesend, Garrick Street	0525 0640 0712	1912 2041



**SCAN HERE TO  
KEEP UPDATED WITH  
OUR LATEST NEWS**

## GRAVESEND ▶ AMAZON LCY3 ▶ DARTFORD

### Monday to Friday

Gravesend, Garrick Street	0717 0845 1729	1847 1917
Thames Way, Springhead Road	0723 0851 1735	1853 1923
Ebbsfleet International Railway Station	0728 0856 1740	1856 1926
Greenhithe Station	0741 0909 1753	1909 1939
Galleon Boulevard	0745 0913 1757	1913 1943
Amazon LCY3	0455 0610 0640 0750 0918 1802 1840 1918 1948 2010	
The Bridge, Marsh Street	0500 0615 0645	1845 2015
Home Gardens for Dartford Station	0509 0624 0654	1854 2024

## DARTFORD ▶ AMAZON LCY3 ▶ GRAVESEND

### Saturdays

Home Gardens for Dartford Station	0734	0900	1746	1900	1934					
The Bridge, Marsh Street	0742	0908	1754	1908	1942					
Amazon LCY3	0455	0610	0640	0750	0916	1803	1840	1916	1950	2010
Galleon Boulevard	0500	0615	0645	1845	2015					
Greenhithe Station	0505	0620	0650	1850	2019					
Ebbsfleet International Railway Station	0517	0632	0702	1902	2031					
Thames Way, Springhead Road	0520	0635	0705	1905	2034					
Gravesend, Garrick Street	0525	0642	0712	1912	2041					

## GRAVESEND ▶ AMAZON LCY3 ▶ DARTFORD

### Saturdays

Gravesend, Garrick Street	0717	0845	1729	1847	1917					
Thames Way, Springhead Road	0723	0851	1735	1853	1923					
Ebbsfleet International Railway Station	0728	0856	1740	1856	1926					
Greenhithe Station	0741	0909	1753	1909	1939					
Galleon Boulevard	0745	0913	1757	1913	1943					
Amazon LCY3	0455	0610	0640	0750	0918	1802	1840	1918	1948	2010
The Bridge, Marsh Street	0500	0615	0645	1845	2015					
Home Gardens for Dartford Station	0509	0624	0654	1854	2024					





# GRAVESEND ▶ AMAZON LCY3 ▶ DARTFORD

## Sundays

Home Gardens for Dartford Station 0734 0900 1746 1900 1934

The Bridge, Marsh Street 0742 0908 1754 1908 1942

Amazon LCY3 0455 0610 0640 0750 0916 1803 1840 1916 1950 2010

Galleon Boulevard 0500 0615 0645 1845 2015

Greenhithe Station 0505 0620 0650 1850 2019

Ebbsfleet International Railway Station 0517 0632 0702 1902 2031

Thames Way, Springhead Road 0520 0635 0705 1905 2034

Gravesend, Garrick Street 0525 0640 0712 1912 2041



**SCAN HERE TO  
PLAN YOUR JOURNEY**

# DARTFORD ▶ AMAZON LCY3 ▶ GRAVESEND

## Sundays

Gravesend, Garrick Street 0717 0845 1729 1847 1917

Thames Way, Springhead Road 0723 0851 1735 1853 1923

Ebbsfleet International Railway Station 0728 0856 1740 1856 1926

Greenhithe Station 0741 0909 1753 1909 1939

Galleon Boulevard 0745 0913 1757 1913 1943

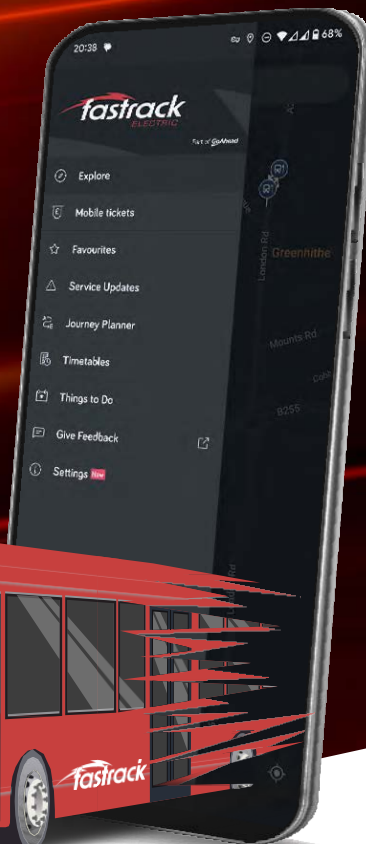
Amazon LCY3 0455 0610 0640 0750 0918 1802 1840 1918 1948 2010

The Bridge, Marsh Street 0500 0615 0645 1845 2015

Home Gardens for Dartford Station 0509 0624 0654 1854 2024

# DOWNLOAD THE *fastrack* APP

*Download the  
app to plan  
your journey,  
track your bus  
and buy tickets.*



**SCAN TO  
DOWNLOAD  
THE APP**

*Available on*



***www.kent-fastrack.co.uk***

# EARN MORE



BECOME A  
**BUS DRIVER**  
with **fastrack**  
ELECTRIC

*We're recruiting full and part time bus drivers*

*Do you have a PCV licence? Join the Fastrack team and fast track your career!*

*To find out more visit:  
[www.kent-fastrack.co.uk/careers](http://www.kent-fastrack.co.uk/careers)*



**SCAN TO  
APPLY TODAY**



# **USEFUL INFORMATION**

**Fastrack (Part of Go-Ahead)  
Unit 1, Newton's Court  
Dartford, DA2 6QL**

**[www.kent-fastrack.co.uk](http://www.kent-fastrack.co.uk)  
[www.go-ahead.com](http://www.go-ahead.com)**

**Fastrack - Public Transport  
Kent County Council  
PO Box 441  
ME6 9HJ**

**[www.kent.gov.uk](http://www.kent.gov.uk)  
[fastrack.electric@kent.gov.uk](mailto:fastrack.electric@kent.gov.uk)**

---

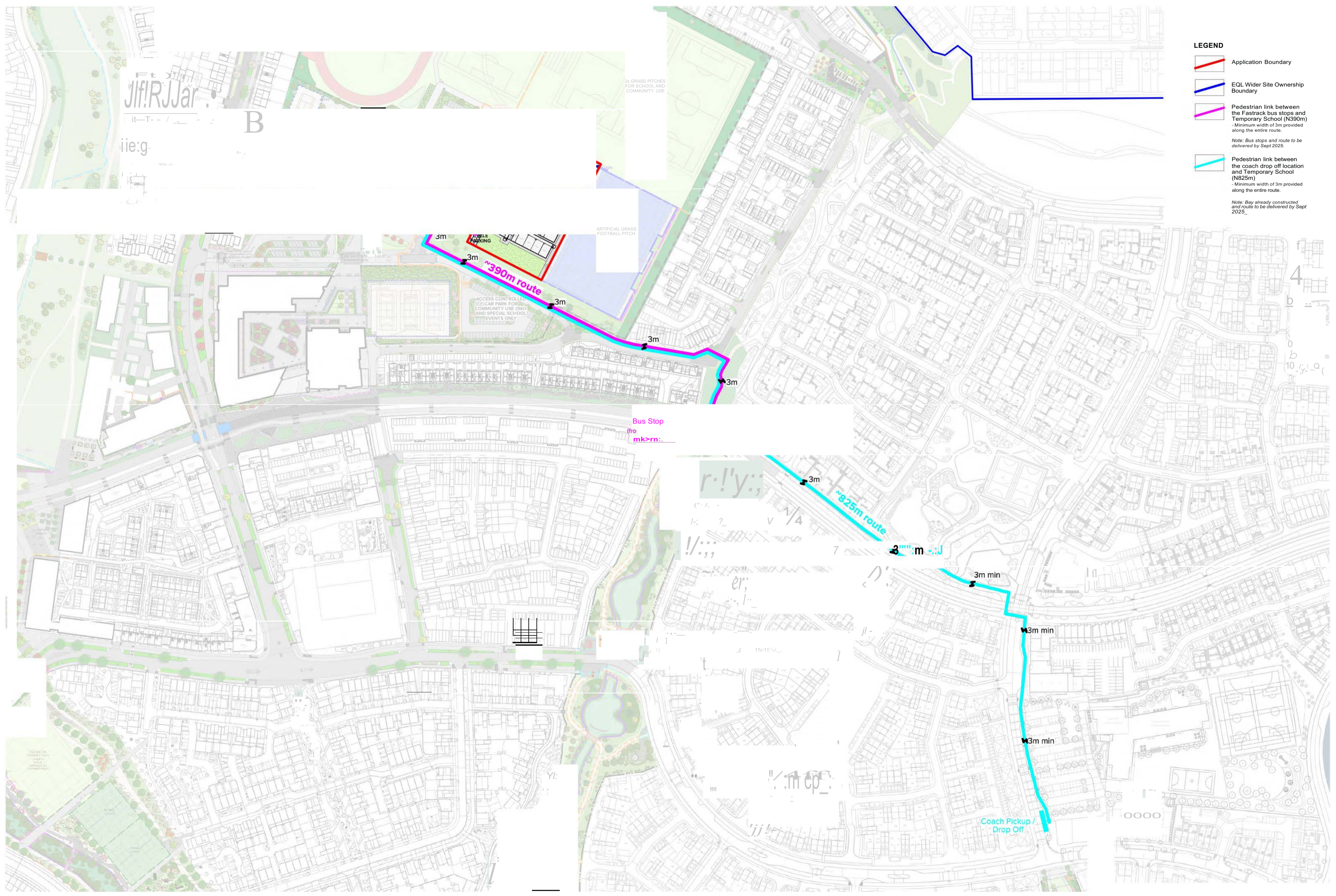
# **GENERAL TRAVEL INFORMATION**

**[www.bustimes.org](http://www.bustimes.org)**

***Times and fares correct at time of  
printing. To review details of your  
journey, please visit:***

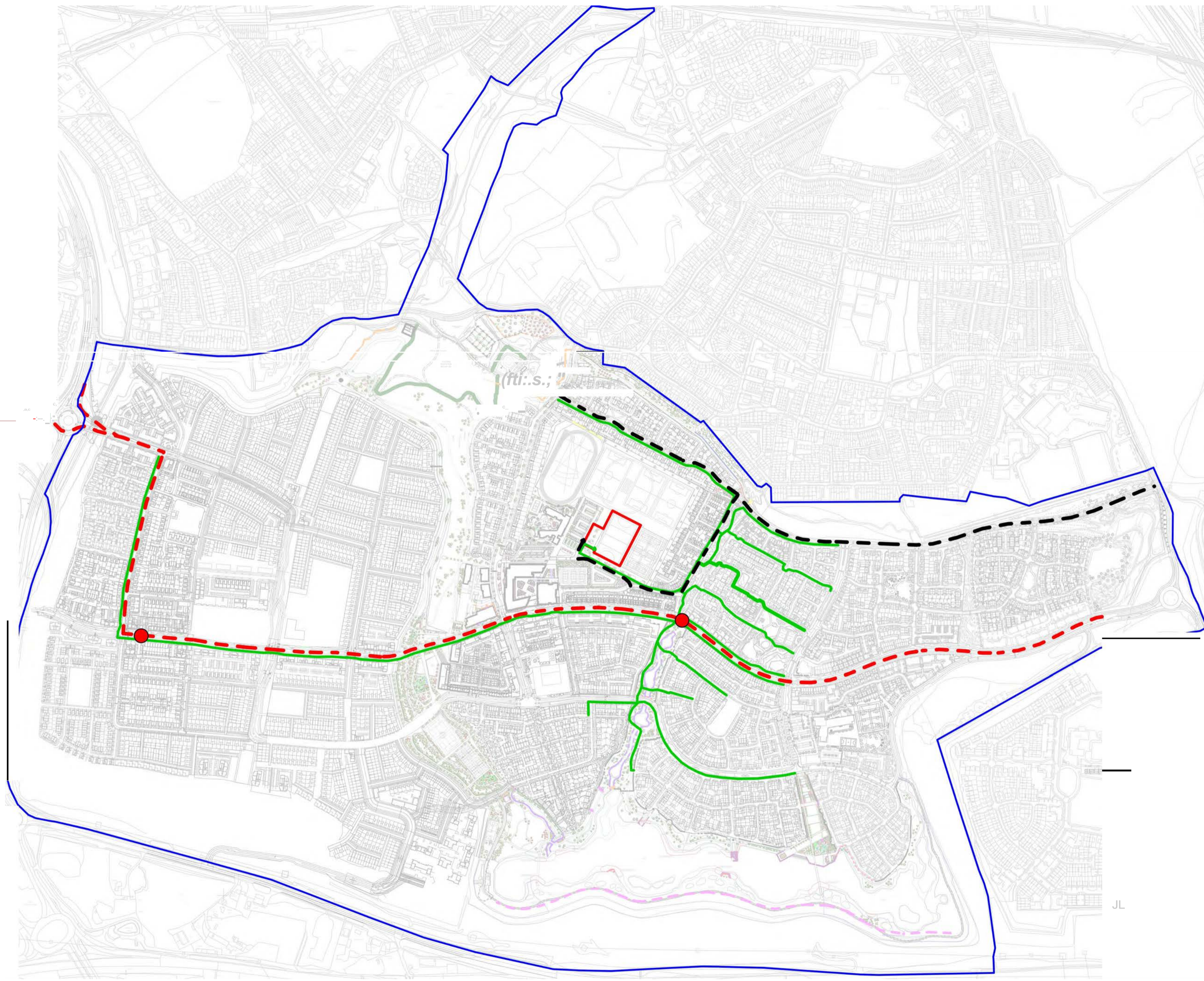
**[www.kent-fastrack.co.uk](http://www.kent-fastrack.co.uk)  
Or call our team on 01322 941020**







**Appendix B**  
**Walking and cycling routes**



- LEGEND**
- ▬ Application Boundary
  - ▬ EQL Wider Site Ownership Boundary
  - ▬ Pedestrian link between the Fastrack bus stops and Temporary School (N390m)  
- Minimum width of 3m provided along the entire route.  
*Note: Bus stops and route to be delivered by Sept 2025.*
  - ▬ Pedestrian link between the coach drop off location and Temporary School (N825m)  
- Minimum width of 3m provided along the entire route.  
*Note: Bay already constructed and route to be delivered by Sept 2025.*

**Appendix C**  
**Wider area routes**



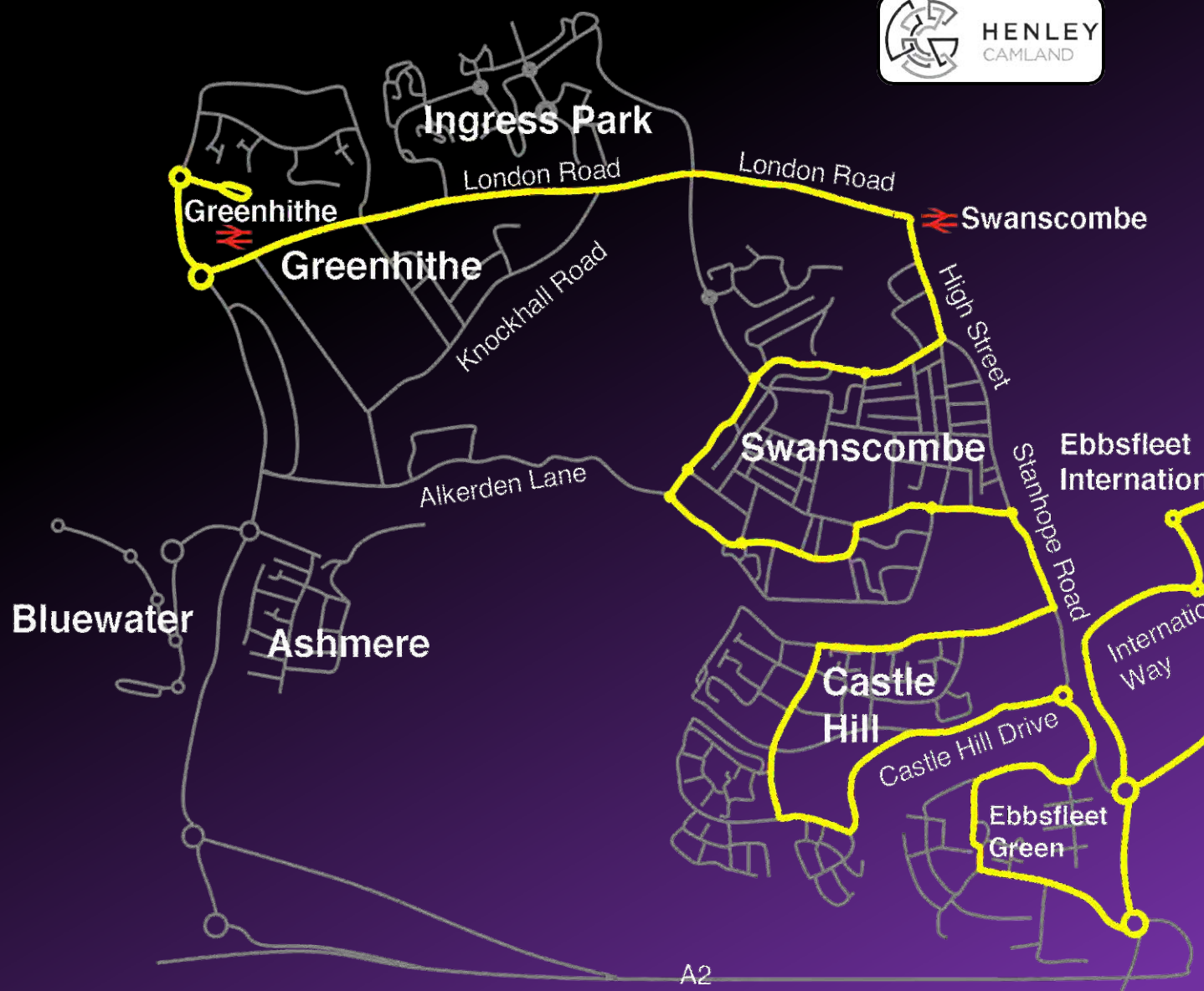
- LEGEND**
-  Application boundary
  -  EQL wider site ownership boundary
  -  Pedestrian and cycle connections  
- Connections shown are already in place (Castle Hill) or will be delivered in Ashmere and Aikerden by Sept 2025
  - 2**  Fastrack bus connection  
- Operational by Sept 2025
  -  Fastrack bus stops  
- Stops operation by Sept 2025  
- Two locations with a stop on either side (four bus stops in total)
  -  Vehicular connection for staff and community use  
- Operational by Sept 2025



**Appendix D**  
**Go-Coach details**



# GC1 Your new daily service



Contact us on:  
info@go-coach.co.uk  
01732 469 800

The Bus Depot  
London Road  
Swanley  
Kent  
BR8 8BY

From 2<sup>nd</sup> January 2025

# GC1

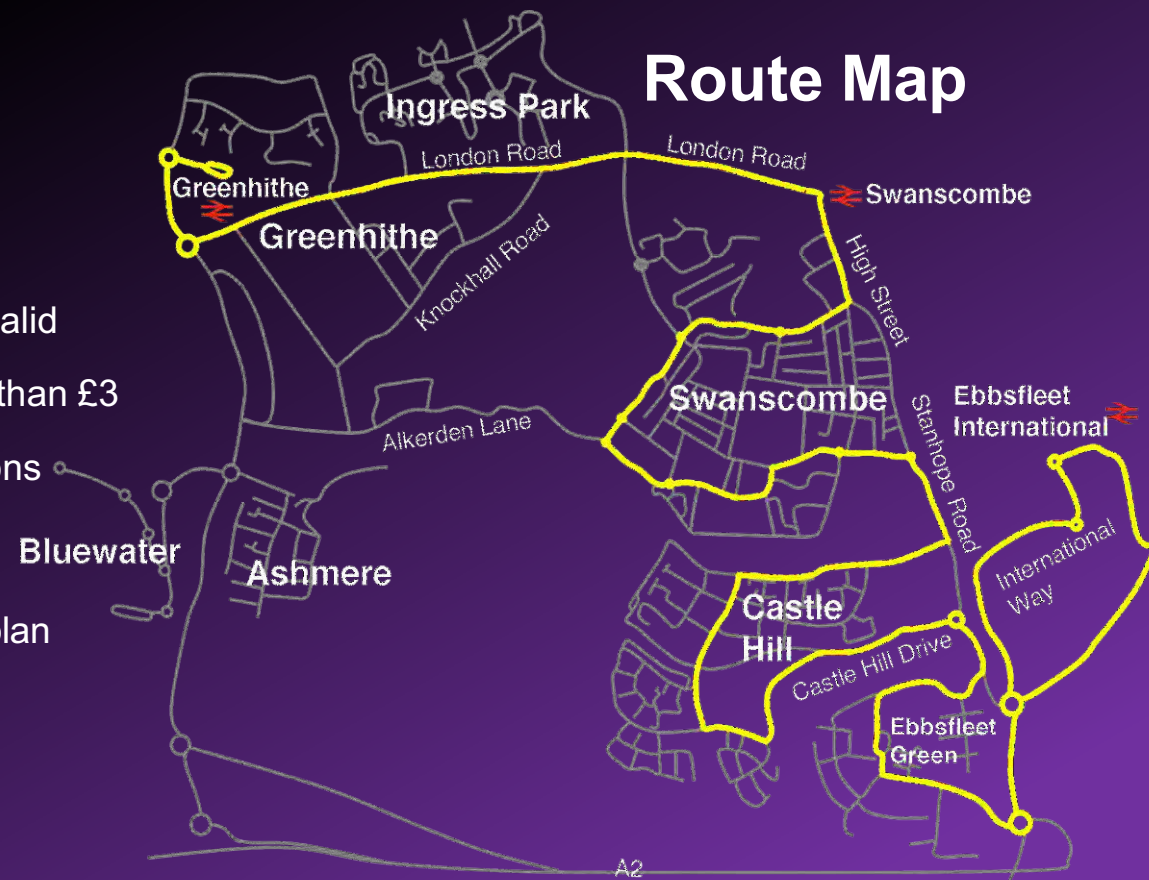
## Your new daily service

From 2<sup>nd</sup> January 2025



- ✓ Multi-operator tickets valid
- ✓ Single tickets no more than £3
- ✓ Connects to train stations
- ✓ Local operator
- ✓ Service improvement plan

## Route Map



### Daily timetable:

Ebbfleet International	0635	0705	0735	0805	0835	0905	0935	At these minutes	05	35	until	1635	1705	1735	1805	1835	1905	1935
Ackers Drive, Stopes Avenue	0642	0712	0742	0812	0842	0912	0942		12	42		1642	1712	1742	1812	1842	1912	1942
Cherry Orchard, Co-op	0645	0715	0745	0815	0845	0915	0945		15	45		1645	1715	1745	1815	1845	1915	1915
Alkerden Lane, Milton Street	0652	0722	0752	0822	0852	0922	0952		22	52		1652	1722	1752	1822	1852	1922	1922
Swanscombe, George & Dragon	0658	0728	0758	0828	0858	0928	0958	28	58	1658	1728	1758	1828	1858	1928	1958		
Greenhithe Station	0703	0733	0803	0833	0903	0933	1003	33	03	1703	1733	1803	1833	1903	1933	2003		
Greenhithe Station	0705	0735	0805	0835	0905	0935	1005	35	05	1705	1735	1805	1835	1905	1935	2005		
Swanscombe, Station	0710	0740	0810	0840	0910	0940	1010	40	10	1710	1740	1810	1840	1910	1940	2010		
Alkerden Lane, Milton Street	0716	0746	0816	0846	0916	0946	1016	46	16	1716	1746	1816	1846	1916	1946	2016		
Cherry Orchard, Co-op	0725	0755	0825	0855	0925	0955	1025	55	25	1725	1755	1825	1855	1925	1955	2025		
Ackers Drive, Stopes Avenue	0728	0758	0828	0858	0928	0958	1028	58	28	1728	1758	1828	1858	1928	1958	2028		
Ebbfleet International	0734	0804	0834	0904	0934	1004	1034	04	34	1734	1804	1834	1904	1934	2004	2034		

Contact us on:  
[info@go-coach.co.uk](mailto:info@go-coach.co.uk)  
 01732 469 800

The Bus Depot, London Road  
 Swanley, Kent  
 BR8 8BY

From early February these journeys will be replaced by Demand Responsive Transport provided by Go-Coach, more information on this will be provided soon

